

# Supplier Scorecard

Supplier: ALRO STEEL CORP



Overall Score	Rating
90-100 points	Excellent
81-89.99 points	Good
Below 81 points	Poor

% On-Time Delivery	Points
95%-100%	22
90%-94.99%	15
Below 90%	0

Fill Rate %	Points
100%	10
90%-99.99%	5
Below 90%	0

Quality Performance %	Points
98%-100%	23
92%-97.99%	15
Below 92%	0

Field Issues
-5 points each

Intangibles
Maximum Score: 15

Orders/Quotations Acknowledged	Points
100%	10
90% - 99.99%	5
Below 90%	0

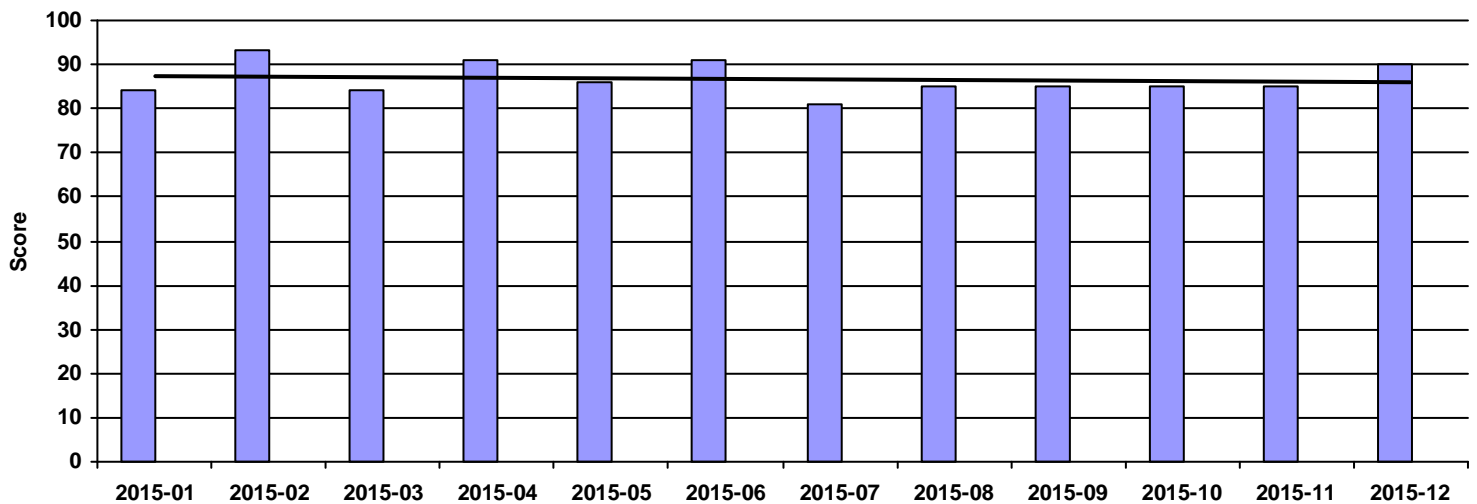
Continuous Improvement	Points
CI that directly effected DeWys	10
CI that effected supplier	8
CI meeting with purchasing team	5
NO meeting with purchasing team	0

Commercial Credit Score Class	Points
5 - High	1
4	2
3 - Medium	3
2	4
1 - Low	5

Financial Stress Score Class	Points
5 - High	1
4	2
3 - Medium	3
2	4
1 - Low	5

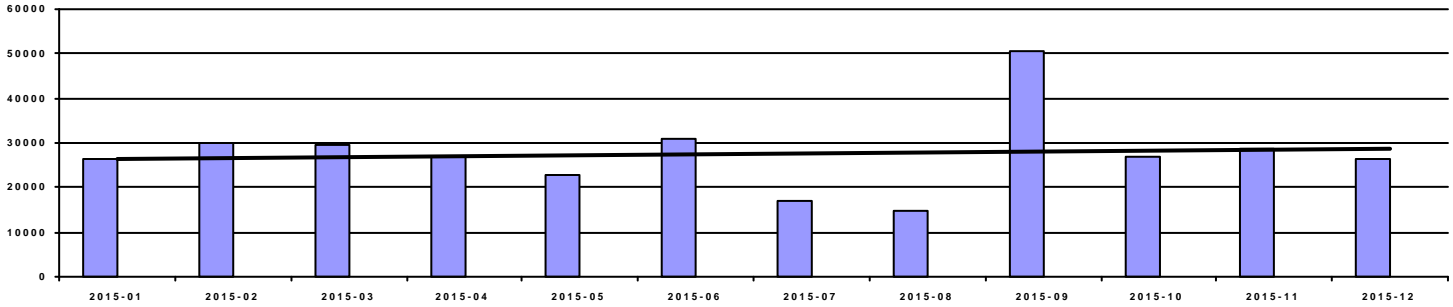
Continuous Improvement Credential	Points
Registered Quality Management System	+2
Vendor Managed Inventory	+2
Team/Person responsible for CI(full time)	+2

Overall Score



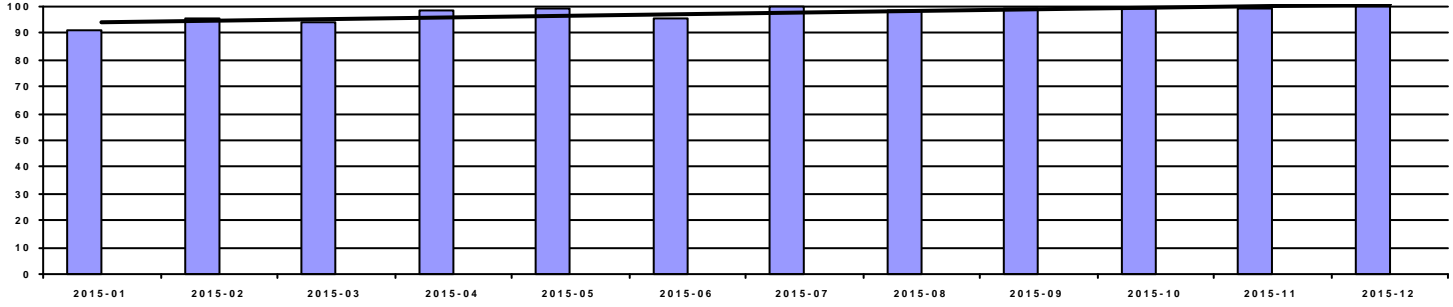
Period	2015-01	2015-02	2015-03	2015-04	2015-05	2015-06	2015-07	2015-08	2015-09	2015-10	2015-11	2015-12
Score	84	93	84	91	86	91	81	85	85	85	85	90
Rating	Good	Excellent	Good	Excellent	Good	Excellent	Good	Good	Good	Good	Good	Excellent

### Spend



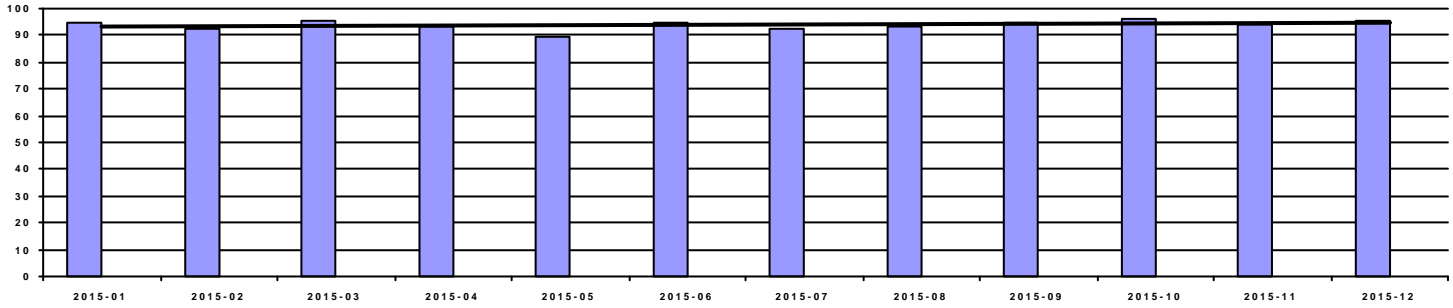
Period	2015-01	2015-02	2015-03	2015-04	2015-05	2015-06	2015-07	2015-08	2015-09	2015-10	2015-11	2015-12
Spend	26,194.53	29,990.14	29,580.61	26,738.21	22,711.49	30,731.18	17,170.70	14,714.67	50,475.95	26,676.82	28,674.17	26,337.27

### OnTime Performance (22 pts)



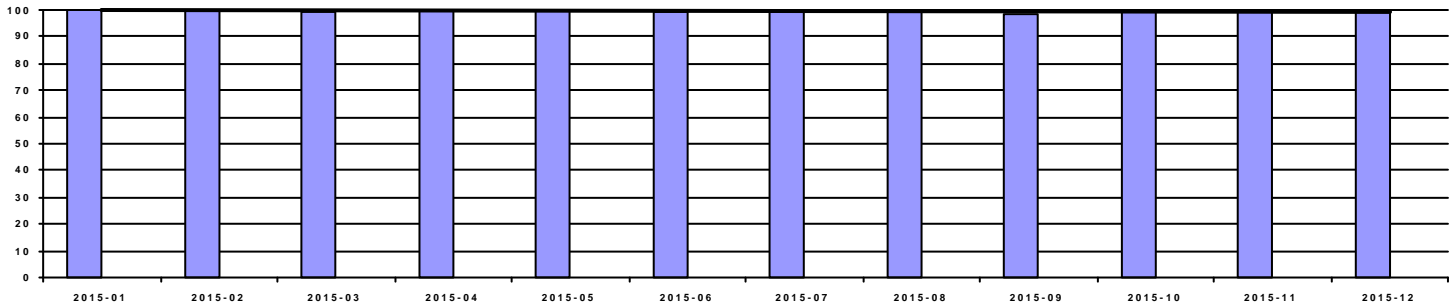
Period	2015-01	2015-02	2015-03	2015-04	2015-05	2015-06	2015-07	2015-08	2015-09	2015-10	2015-11	2015-12
OnTime	90.83%	95.87%	93.70%	98.15%	99.07%	95.65%	100.00%	98.29%	99.40%	99.21%	99.11%	100.00%
Score	15	22	15	22	22	22	22	22	22	22	22	22

### Fill Rate (10 pts)



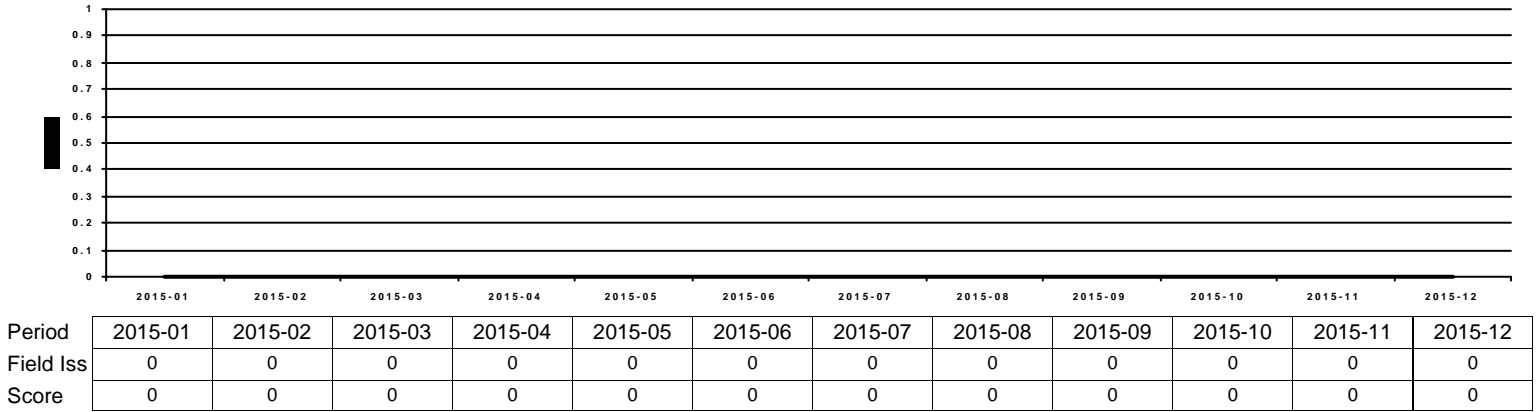
Period	2015-01	2015-02	2015-03	2015-04	2015-05	2015-06	2015-07	2015-08	2015-09	2015-10	2015-11	2015-12
Fill Rate	94.55%	92.62%	95.31%	93.64%	89.81%	94.96%	92.23%	93.22%	94.67%	96.06%	93.81%	95.65%
Score	5	5	5	5	0	5	5	5	5	5	5	5

### Quality Performance (23 pts)

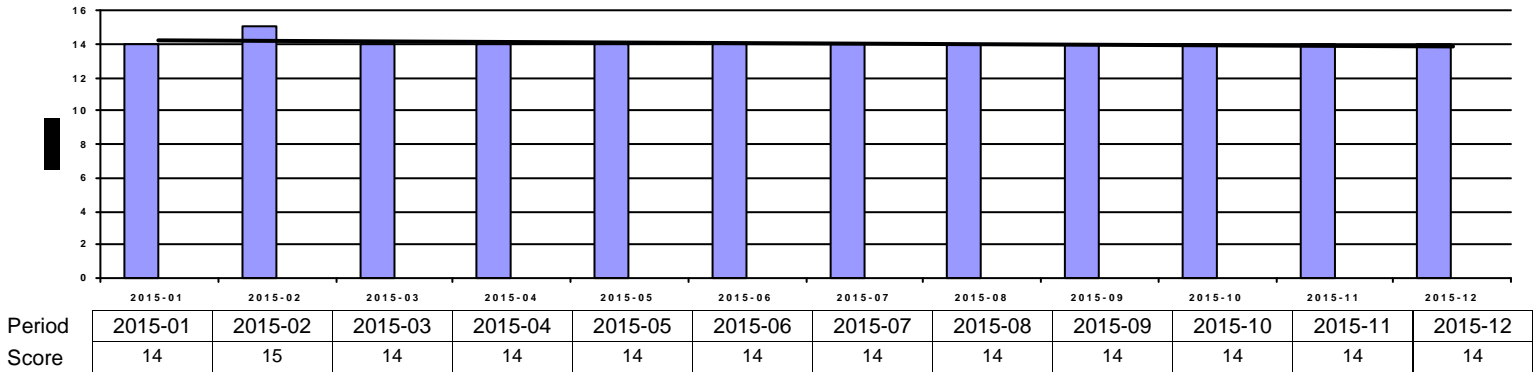


Period	2015-01	2015-02	2015-03	2015-04	2015-05	2015-06	2015-07	2015-08	2015-09	2015-10	2015-11	2015-12
Quality	100.00%	100.00%	99.21%	100.00%	100.00%	99.28%	100.00%	99.15%	98.81%	99.21%	100.00%	100.00%
Score	23	23	23	23	23	23	23	23	23	23	23	23

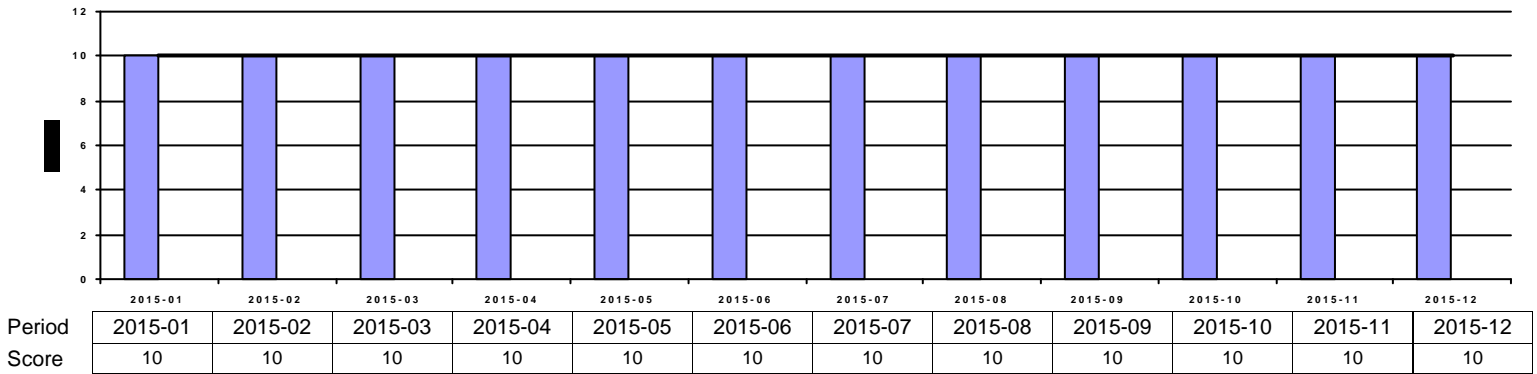
### Field Issues (-5 pts each)



### Intangibles (15 pts)



### Acknowledgement Performance (10 pts)



Period	2015-01	2015-02	2015-03	2015-04	2015-05	2015-06	2015-07	2015-08	2015-09	2015-10	2015-11	2015-12
Cont Imp	10	10	10	10	10	10	0	0	0	0	0	10
CompCr	5	6	5	5	5	5	5	9	9	9	9	4
CI	0	0	0	0	0	0	0	0	0	0	0	0
QMS	2	2	2	2	2	2	2	2	2	2	2	2
VMI	0	0	0	0	0	0	0	0	0	0	0	0