

Supplier Scorecard

Supplier: ALRO STEEL CORP



Overall Score	Rating
90-100 points	Excellent
81-89.99 points	Good
Below 81 points	Poor

% On-Time Delivery	Points
95%-100%	22
90%-94.99%	15
Below 90%	0

Fill Rate %	Points
100%	10
90%-99.99%	5
Below 90%	0

Quality Performance %	Points
98%-100%	23
92%-97.99%	15
Below 92%	0

Field Issues
-5 points each

Intangibles
Maximum Score: 15

Orders/Quotations Acknowledged	Points
100%	10
90% - 99.99%	5
Below 90%	0

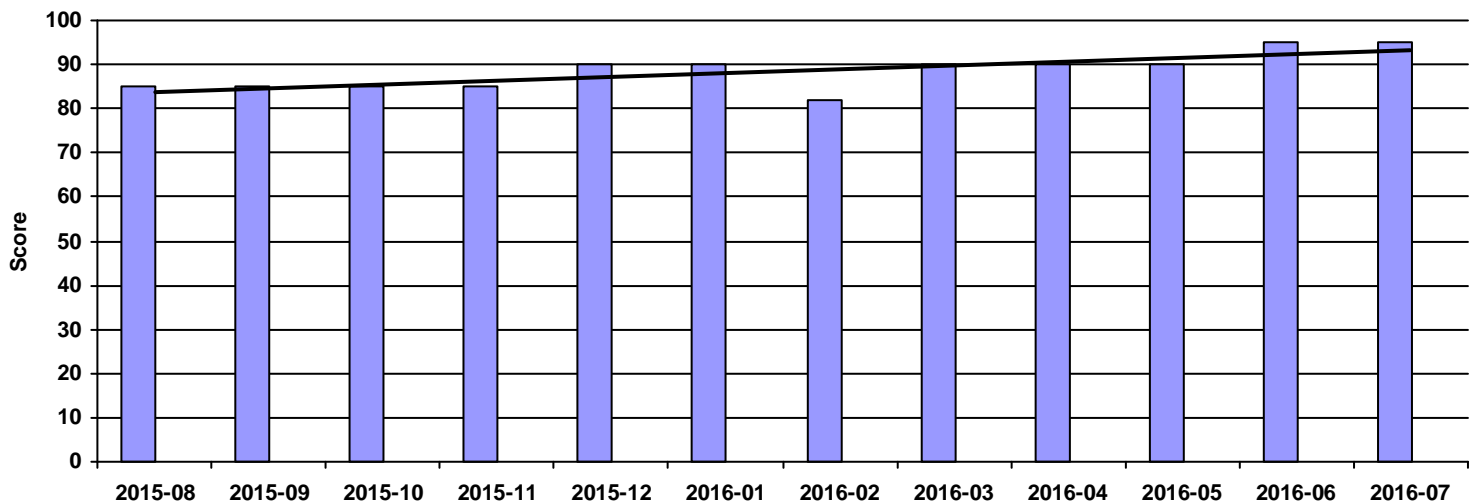
Continuous Improvement	Points
CI that directly effected DeWys	10
CI that effected supplier	8
CI meeting with purchasing team	5
NO meeting with purchasing team	0

Commercial Credit Score Class	Points
5 - High	1
4	2
3 - Medium	3
2	4
1 - Low	5

Financial Stress Score Class	Points
5 - High	1
4	2
3 - Medium	3
2	4
1 - Low	5

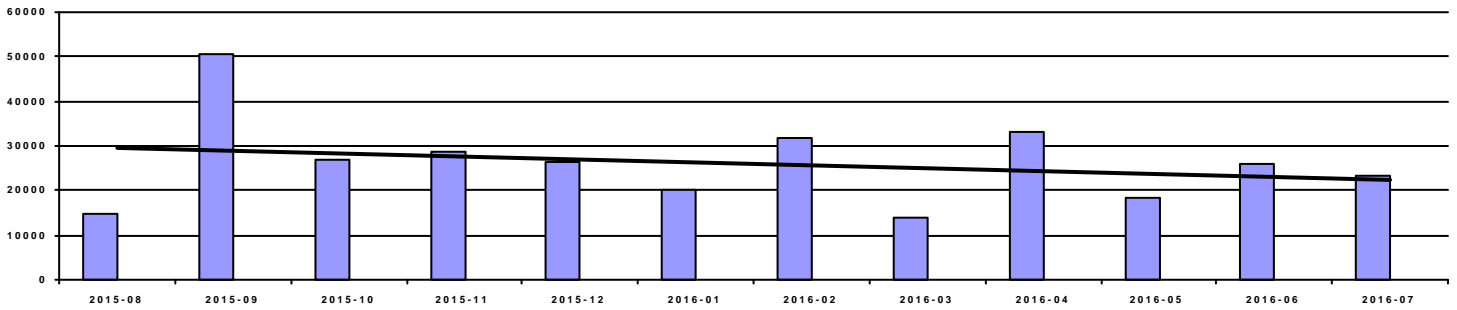
Continuous Improvement Credential	Points
Registered Quality Management System	+2
Vendor Managed Inventory	+2
Team/Person responsible for CI(full time)	+2

Overall Score



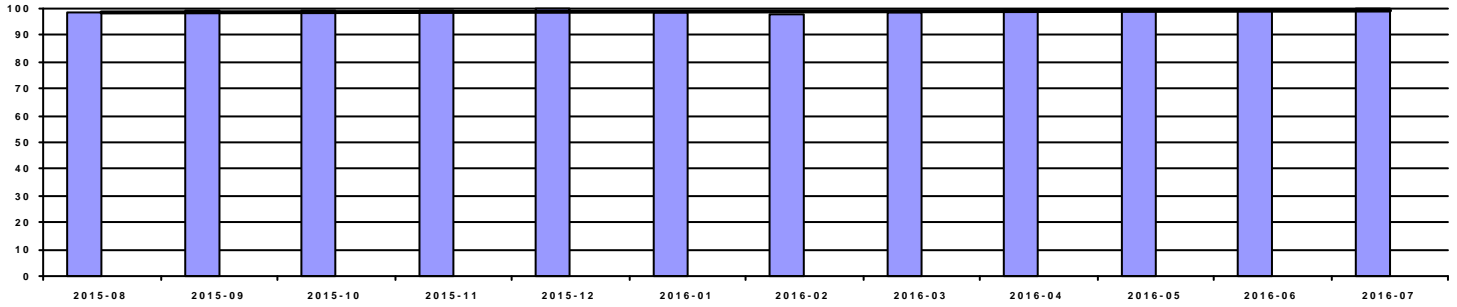
Period	2015-08	2015-09	2015-10	2015-11	2015-12	2016-01	2016-02	2016-03	2016-04	2016-05	2016-06	2016-07
Score	85	85	85	85	90	90	82	90	90	90	95	95
Rating	Good	Good	Good	Good	Excellent	Excellent	Good	Excellent	Excellent	Excellent	Excellent	Excellent

Spend



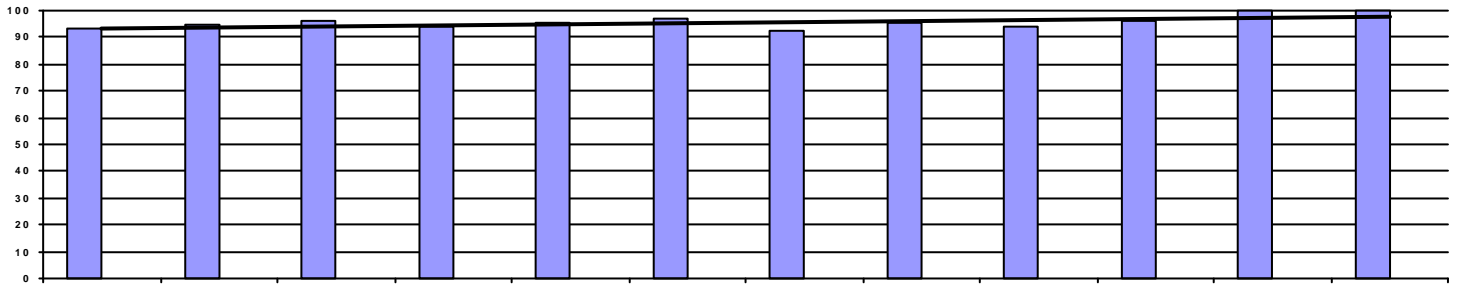
Period	2015-08	2015-09	2015-10	2015-11	2015-12	2016-01	2016-02	2016-03	2016-04	2016-05	2016-06	2016-07
Spend	14,714.67	50,475.95	26,676.82	28,674.17	26,337.27	20,143.39	31,709.31	13,729.03	33,067.04	18,311.13	25,926.40	23,448.67

OnTime Performance (22 pts)



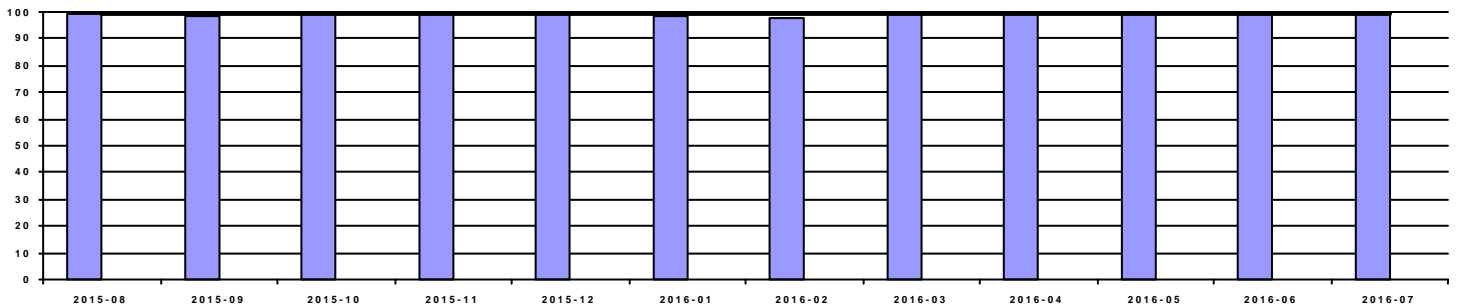
Period	2015-08	2015-09	2015-10	2015-11	2015-12	2016-01	2016-02	2016-03	2016-04	2016-05	2016-06	2016-07
OnTime	98.29%	99.40%	99.21%	99.11%	100.00%	98.25%	97.56%	98.43%	99.00%	99.09%	99.10%	100.00%
Score	22	22	22	22	22	22	22	22	22	22	22	22

Fill Rate (10 pts)



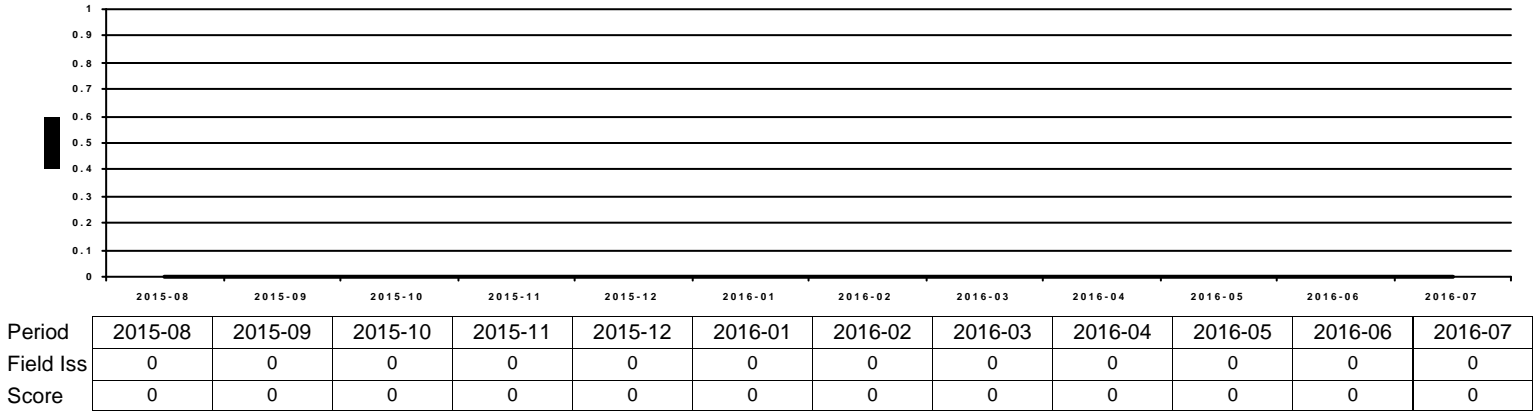
Period	2015-08	2015-09	2015-10	2015-11	2015-12	2016-01	2016-02	2016-03	2016-04	2016-05	2016-06	2016-07
Fill Rate	93.22%	94.67%	96.06%	93.81%	95.65%	97.37%	92.74%	95.35%	94.06%	96.40%	100.00%	100.00%
Score	5	5	5	5	5	5	5	5	5	5	10	10

Quality Performance (23 pts)

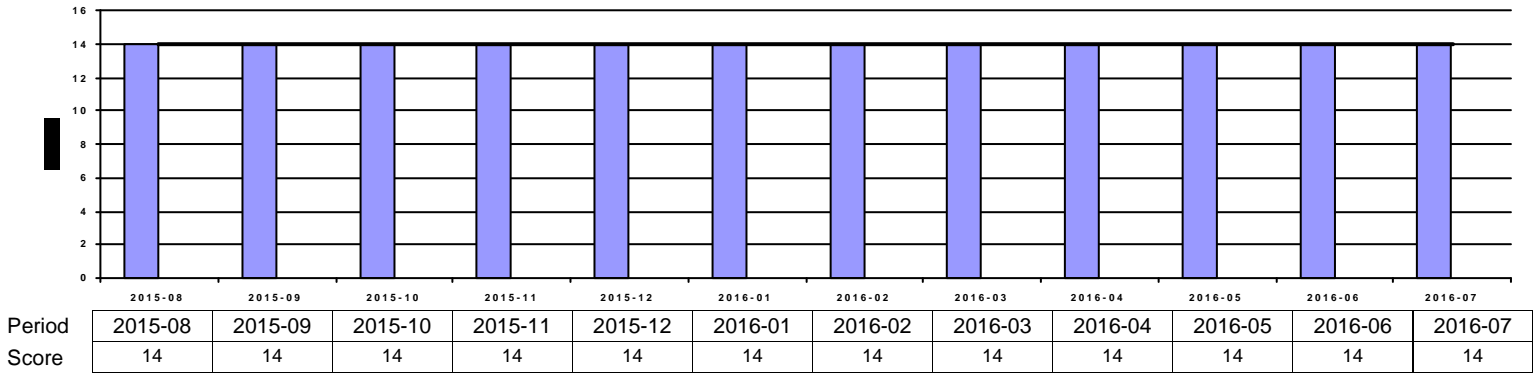


Period	2015-08	2015-09	2015-10	2015-11	2015-12	2016-01	2016-02	2016-03	2016-04	2016-05	2016-06	2016-07
Quality	99.15%	98.81%	99.21%	100.00%	100.00%	98.25%	97.56%	99.21%	100.00%	99.09%	99.10%	100.00%
Score	23	23	23	23	23	23	15	23	23	23	23	23

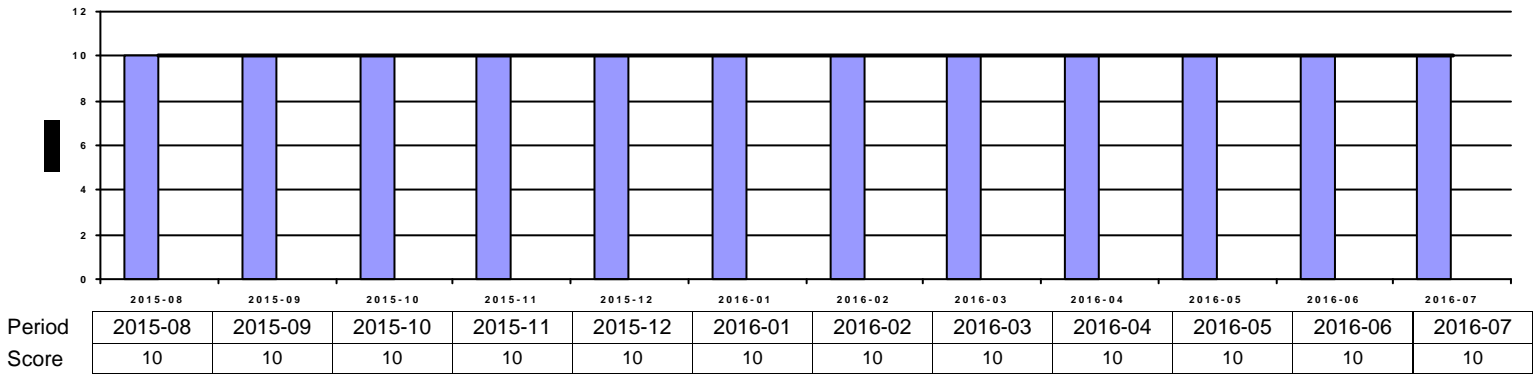
Field Issues (-5 pts each)



Intangibles (15 pts)



Acknowledgement Performance (10 pts)



Period	2015-08	2015-09	2015-10	2015-11	2015-12	2016-01	2016-02	2016-03	2016-04	2016-05	2016-06	2016-07
Cont Imp	0	0	0	0	10	10	10	10	10	10	10	10
CompCr	9	9	9	9	4	4	4	4	4	4	4	4
CI	0	0	0	0	0	0	0	0	0	0	0	0
QMS	2	2	2	2	2	2	2	2	2	2	2	2
VMI	0	0	0	0	0	0	0	0	0	0	0	0