

# Supplier Scorecard

Supplier: GENEVA-LIBERTY STEEL, LTD.



Overall Score	Rating
90-100 points	Excellent
81-89.99 points	Good
Below 81 points	Poor

% On-Time Delivery	Points
95%-100%	22
90%-94.99%	15
Below 90%	0

Fill Rate %	Points
100%	10
90%-99.99%	5
Below 90%	0

Quality Performance %	Points
98%-100%	23
92%-97.99%	15
Below 92%	0

Field Issues
-5 points each

Intangibles
Maximum Score: 15

Orders/Quotations Acknowledged	Points
100%	10
90% - 99.99%	5
Below 90%	0

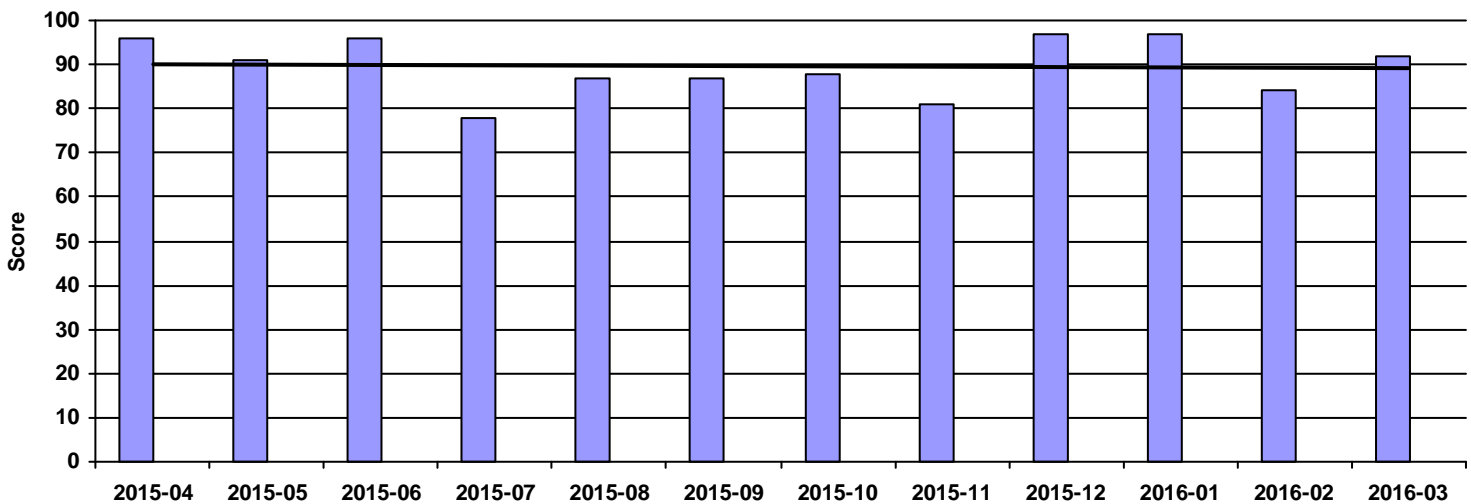
Continuous Improvement	Points
CI that directly effected DeWys	10
CI that effected supplier	8
CI meeting with purchasing team	5
NO meeting with purchasing team	0

Commercial Credit Score Class	Points
5 - High	1
4	2
3 - Medium	3
2	4
1 - Low	5

Financial Stress Score Class	Points
5 - High	1
4	2
3 - Medium	3
2	4
1 - Low	5

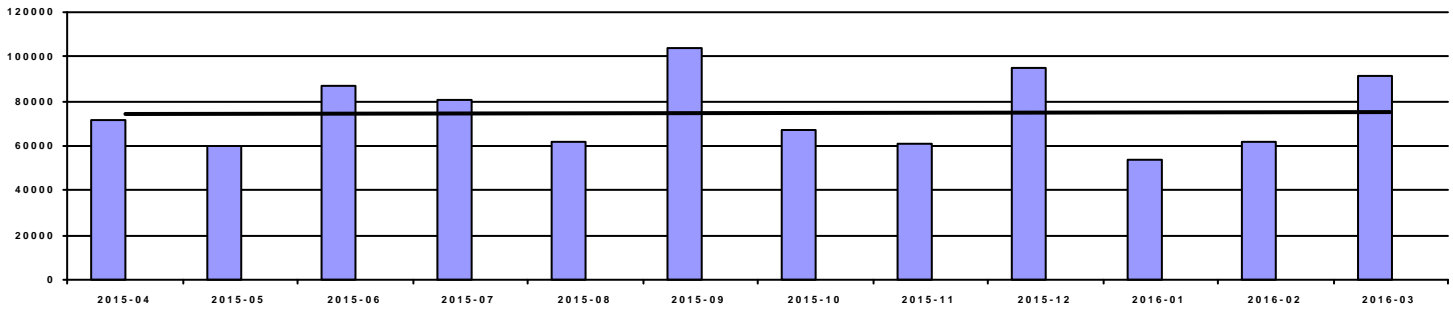
Continuous Improvement Credential	Points
Registered Quality Management System	+2
Vendor Managed Inventory	+2
Team/Person responsible for CI(full time)	+2

Overall Score



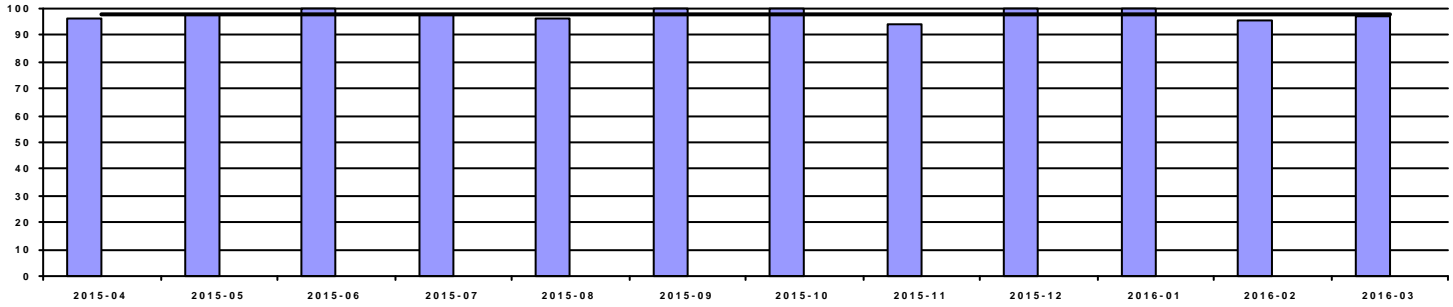
Period	2015-04	2015-05	2015-06	2015-07	2015-08	2015-09	2015-10	2015-11	2015-12	2016-01	2016-02	2016-03
Score	96	91	96	78	87	87	88	81	97	97	84	92
Rating	Excellent	Excellent	Excellent	Poor	Good	Good	Good	Good	Excellent	Excellent	Good	Excellent

### Spend



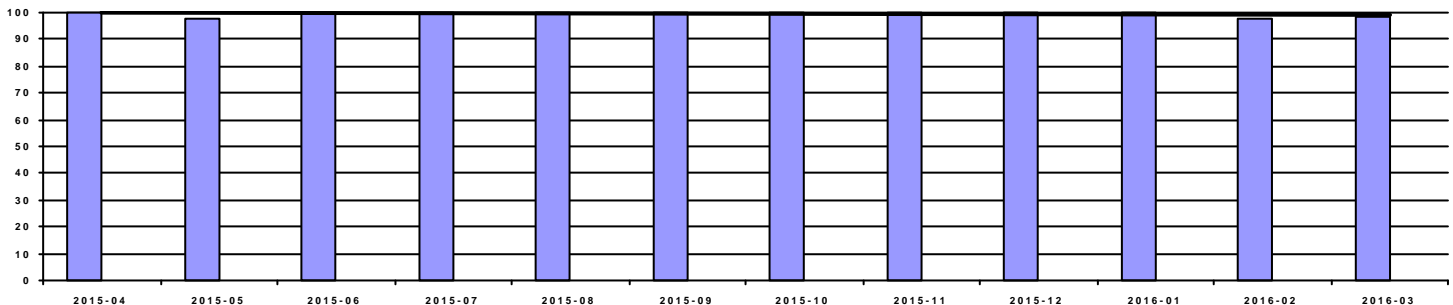
Period	2015-04	2015-05	2015-06	2015-07	2015-08	2015-09	2015-10	2015-11	2015-12	2016-01	2016-02	2016-03
Spend	71,986.89	60,103.41	87,197.76	80,205.04	61,854.10	104,212.82	67,476.05	60,902.55	95,312.21	53,970.55	62,212.12	91,185.36

### OnTime Performance (22 pts)



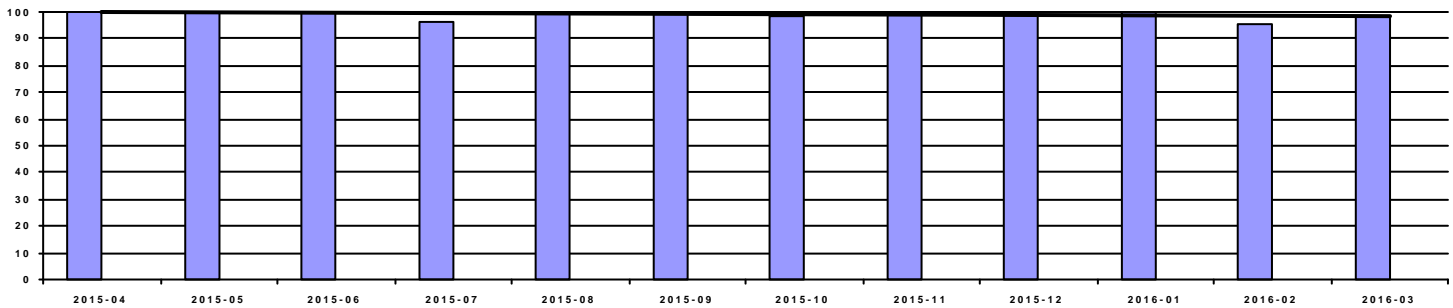
Period	2015-04	2015-05	2015-06	2015-07	2015-08	2015-09	2015-10	2015-11	2015-12	2016-01	2016-02	2016-03
OnTime	96.23%	97.73%	100.00%	98.04%	95.92%	100.00%	100.00%	94.23%	100.00%	100.00%	95.74%	97.22%
Score	22	22	22	22	22	22	22	15	22	22	22	22

### Fill Rate (10 pts)



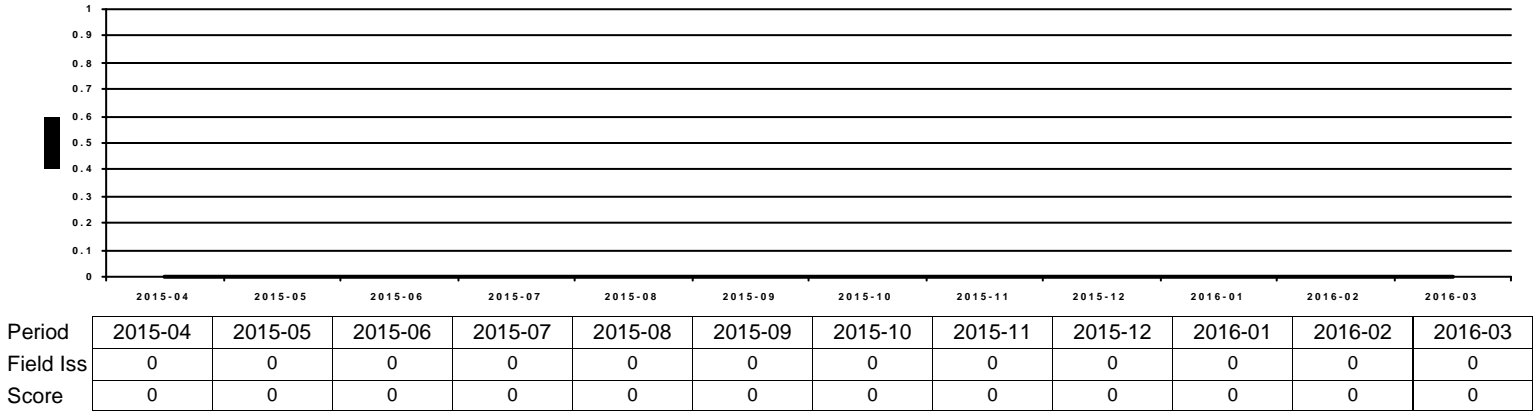
Period	2015-04	2015-05	2015-06	2015-07	2015-08	2015-09	2015-10	2015-11	2015-12	2016-01	2016-02	2016-03
Fill Rate	100.00%	97.73%	100.00%	100.00%	100.00%	100.00%	100.00%	100.00%	100.00%	100.00%	97.87%	98.63%
Score	10	5	10	10	10	10	10	10	10	10	5	5

### Quality Performance (23 pts)

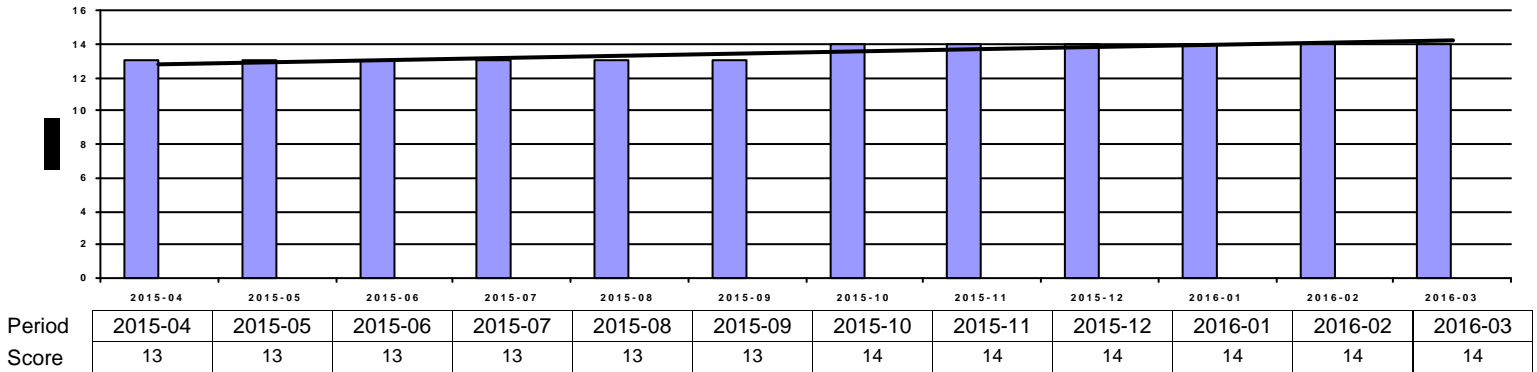


Period	2015-04	2015-05	2015-06	2015-07	2015-08	2015-09	2015-10	2015-11	2015-12	2016-01	2016-02	2016-03
Quality	100.00%	100.00%	100.00%	96.08%	100.00%	100.00%	98.18%	100.00%	100.00%	100.00%	95.74%	98.61%
Score	23	23	23	15	23	23	23	23	23	23	15	23

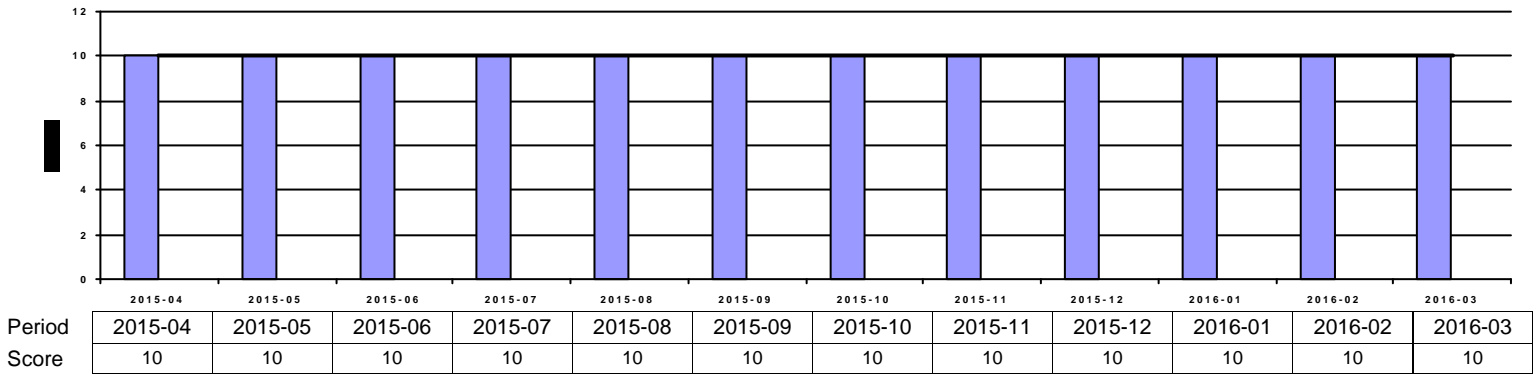
**Field Issues (-5 pts each)**



**Intangibles (15 pts)**



**Acknowledgement Performance (10 pts)**



Period	2015-04	2015-05	2015-06	2015-07	2015-08	2015-09	2015-10	2015-11	2015-12	2016-01	2016-02	2016-03
Cont Imp	10	10	10	0	0	0	0	0	10	10	10	10
CompCr	6	6	6	6	7	7	7	7	6	6	6	6
CI	0	0	0	0	0	0	0	0	0	0	0	0
QMS	2	2	2	2	2	2	2	2	2	2	2	2
VMI	0	0	0	0	0	0	0	0	0	0	0	0