

# Supplier Scorecard

Supplier: IVC INDUSTRIAL COATINGS, INC.



Overall Score	Rating
90-100 points	Excellent
81-89.99 points	Good
Below 81 points	Poor

% On-Time Delivery	Points
95%-100%	22
90%-94.99%	15
Below 90%	0

Fill Rate %	Points
100%	10
90%-99.99%	5
Below 90%	0

Quality Performance %	Points
98%-100%	23
92%-97.99%	15
Below 92%	0

Field Issues
-5 points each

Intangibles
Maximum Score: 15

Orders/Quotations Acknowledged	Points
100%	10
90% - 99.99%	5
Below 90%	0

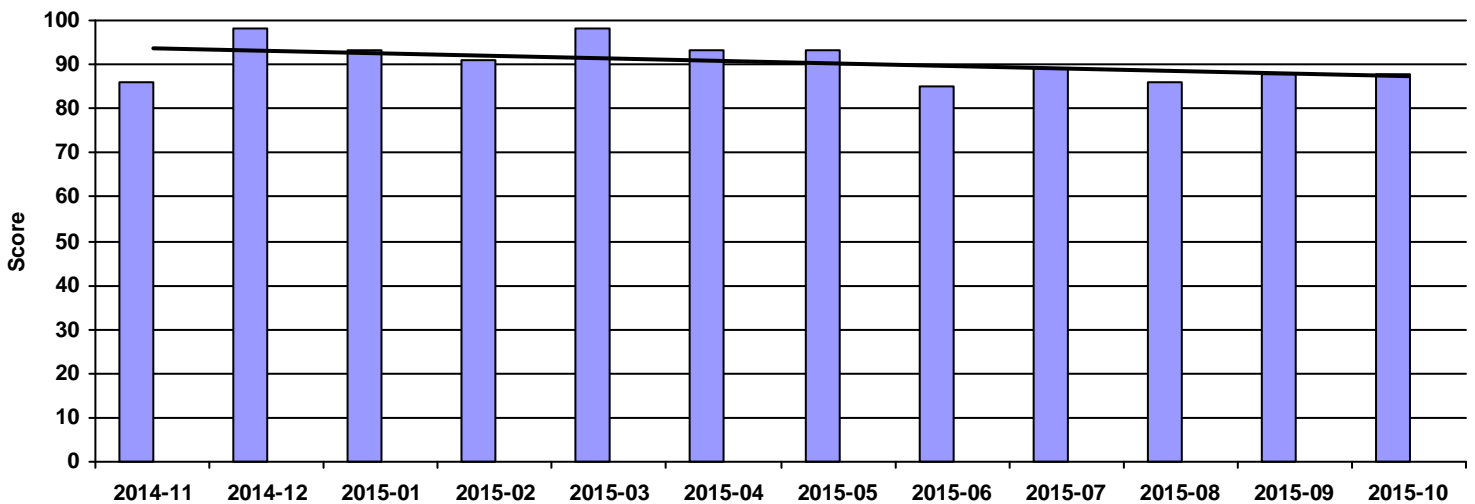
Continuous Improvement	Points
CI that directly effected DeWys	10
CI that effected supplier	8
CI meeting with purchasing team	5
NO meeting with purchasing team	0

Commercial Credit Score Class	Points
5 - High	1
4	2
3 - Medium	3
2	4
1 - Low	5

Financial Stress Score Class	Points
5 - High	1
4	2
3 - Medium	3
2	4
1 - Low	5

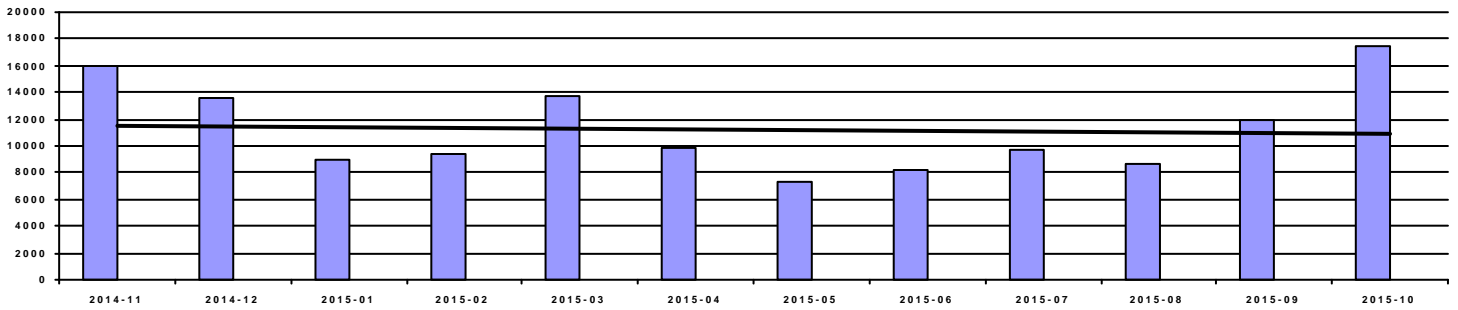
Continuous Improvement Credential	Points
Registered Quality Management System	+2
Vendor Managed Inventory	+2
Team/Person responsible for CI(full time)	+2

Overall Score



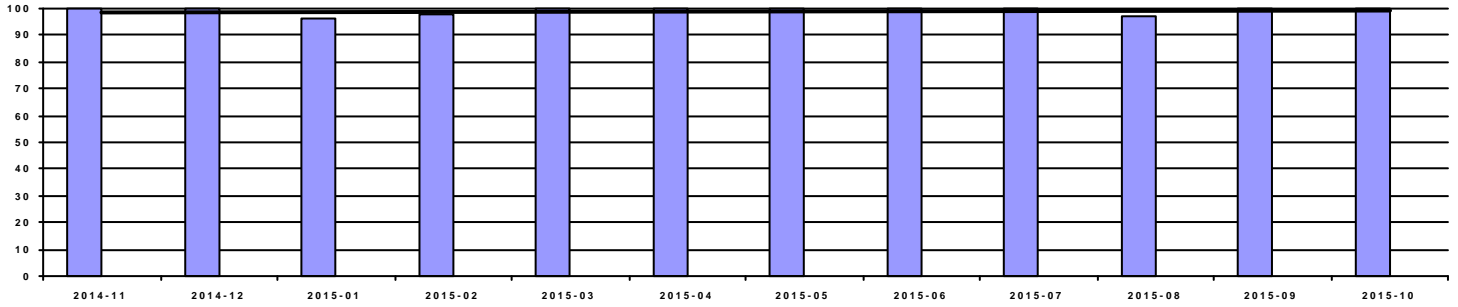
Period	2014-11	2014-12	2015-01	2015-02	2015-03	2015-04	2015-05	2015-06	2015-07	2015-08	2015-09	2015-10
Score	86	98	93	91	98	93	93	85	89	86	88	88
Rating	Good	Excellent	Excellent	Excellent	Excellent	Excellent	Excellent	Good	Good	Good	Good	Good

### Spend



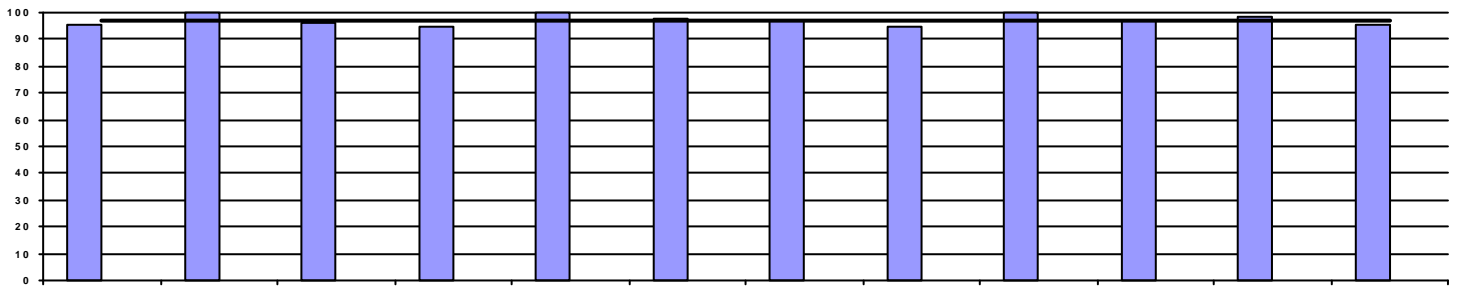
Period	2014-11	2014-12	2015-01	2015-02	2015-03	2015-04	2015-05	2015-06	2015-07	2015-08	2015-09	2015-10
Spend	16,004.81	13,511.18	8,948.95	9,394.67	13,712.45	9,831.04	7,343.20	8,154.90	9,764.40	8,640.48	11,927.24	17,489.00

### OnTime Performance (22 pts)



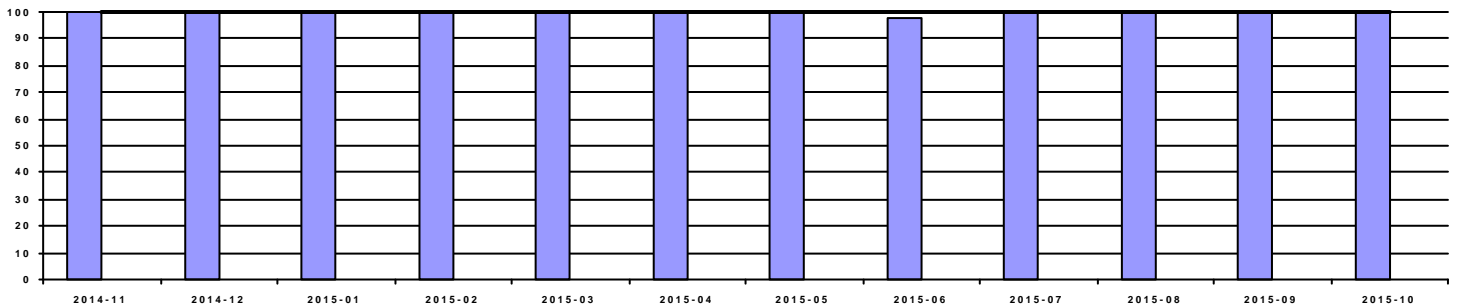
Period	2014-11	2014-12	2015-01	2015-02	2015-03	2015-04	2015-05	2015-06	2015-07	2015-08	2015-09	2015-10
OnTime	100.00%	100.00%	96.15%	97.44%	100.00%	100.00%	100.00%	100.00%	100.00%	97.14%	100.00%	100.00%
Score	15	22	22	22	22	22	22	22	22	22	22	22

### Fill Rate (10 pts)



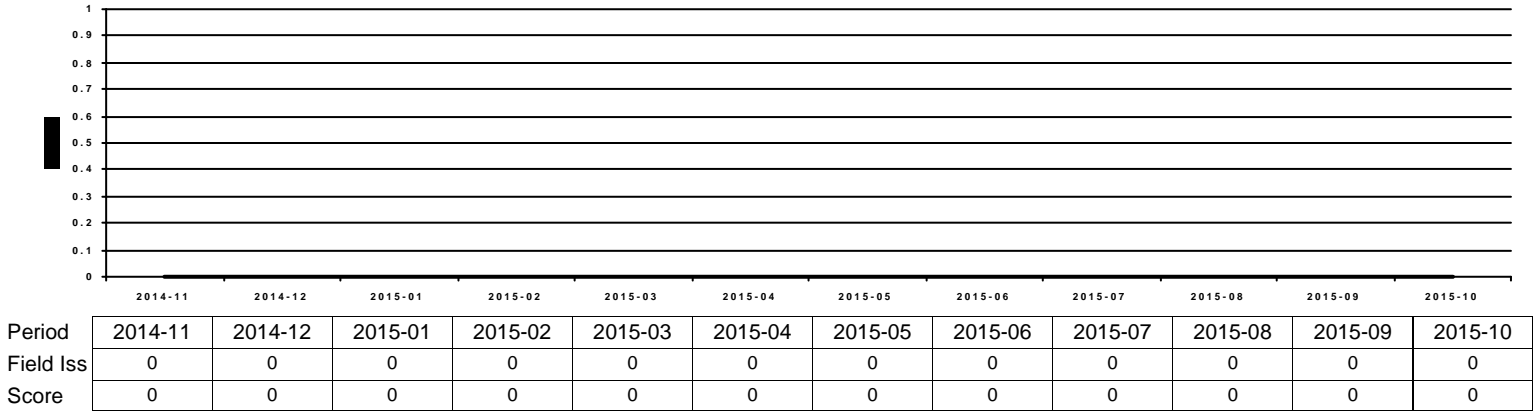
Period	2014-11	2014-12	2015-01	2015-02	2015-03	2015-04	2015-05	2015-06	2015-07	2015-08	2015-09	2015-10
Fill Rate	95.56%	100.00%	96.15%	94.87%	100.00%	97.73%	96.88%	95.00%	100.00%	97.14%	98.15%	95.56%
Score	5	10	5	5	10	5	5	5	10	5	5	5

### Quality Performance (23 pts)

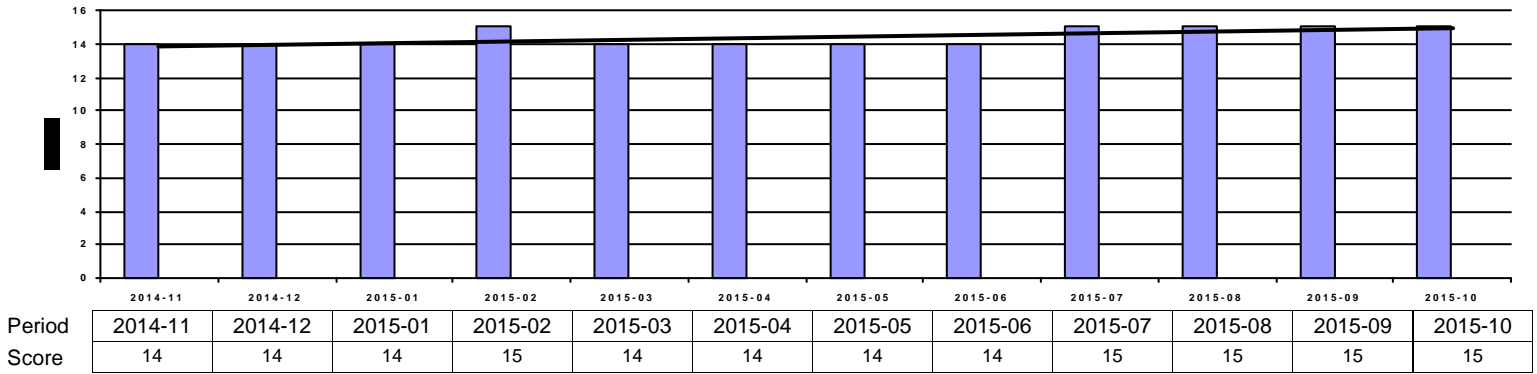


Period	2014-11	2014-12	2015-01	2015-02	2015-03	2015-04	2015-05	2015-06	2015-07	2015-08	2015-09	2015-10
Quality	100.00%	100.00%	100.00%	100.00%	100.00%	100.00%	100.00%	97.50%	100.00%	100.00%	100.00%	100.00%
Score	23	23	23	23	23	23	23	15	23	23	23	23

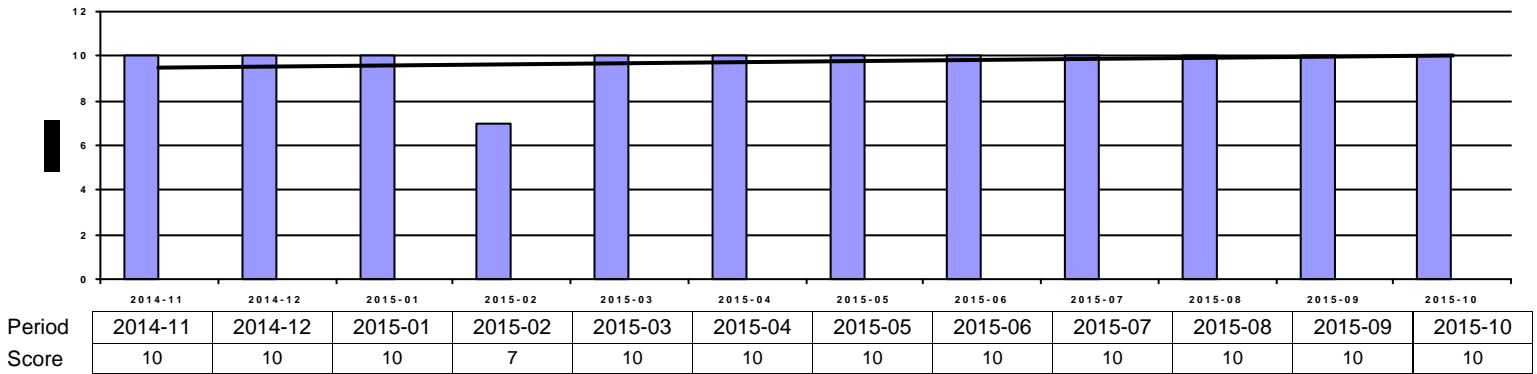
**Field Issues (-5 pts each)**



**Intangibles (15 pts)**



**Acknowledgement Performance (10 pts)**



Period	2014-11	2014-12	2015-01	2015-02	2015-03	2015-04	2015-05	2015-06	2015-07	2015-08	2015-09	2015-10
Cont Imp	10	10	10	10	10	10	10	10	0	0	0	0
CompCr	7	7	7	7	7	7	7	7	7	9	9	9
CI	0	0	0	0	0	0	0	0	0	0	2	2
QMS	2	2	2	2	2	2	2	2	2	2	2	2
VMI	0	0	0	0	0	0	0	0	0	0	0	0