

# Supplier Scorecard

Supplier: JHP FASTENERS, INC.



Run with Precision™

Overall Score	Rating
90-100 points	Excellent
81-89.99 points	Good
Below 81 points	Poor

% On-Time Delivery	Points
95%-100%	22
90%-94.99%	15
Below 90%	0

Fill Rate %	Points
100%	10
90%-99.99%	5
Below 90%	0

Quality Performance %	Points
98%-100%	23
92%-97.99%	15
Below 92%	0

Field Issues
-5 points each

Intangibles
Maximum Score: 15

Orders/Quotations Acknowledged	Points
100%	10
90% - 99.99%	5
Below 90%	0

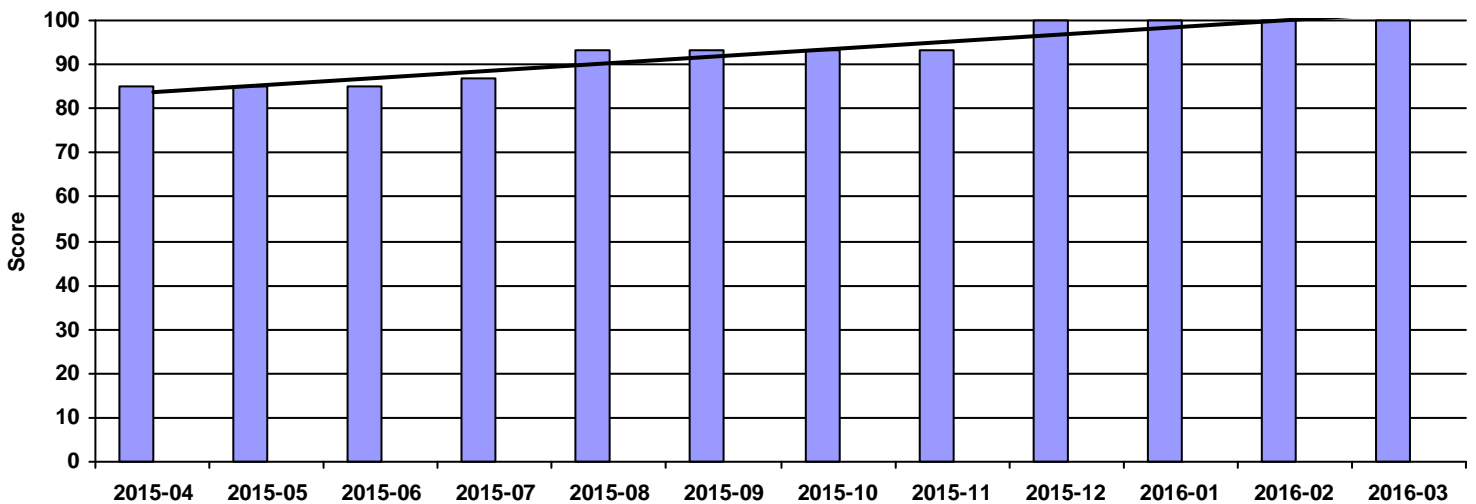
Continuous Improvement	Points
CI that directly effected DeWys	10
CI that effected supplier	8
CI meeting with purchasing team	5
NO meeting with purchasing team	0

Commercial Credit Score Class	Points
5 - High	1
4	2
3 - Medium	3
2	4
1 - Low	5

Financial Stress Score Class	Points
5 - High	1
4	2
3 - Medium	3
2	4
1 - Low	5

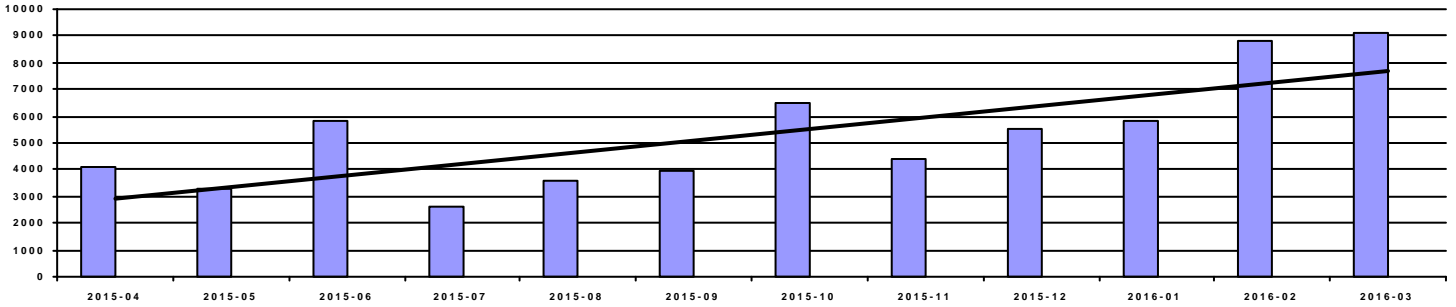
Continuous Improvement Credential	Points
Registered Quality Management System	+2
Vendor Managed Inventory	+2
Team/Person responsible for CI(full time)	+2

Overall Score



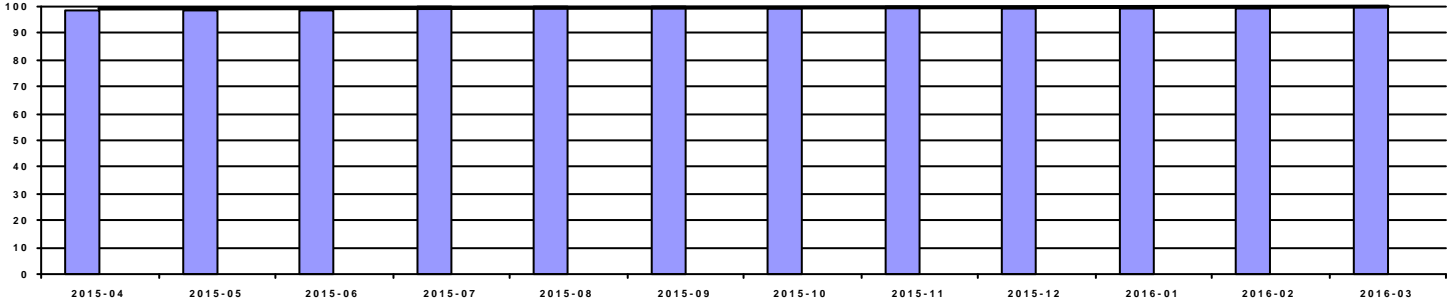
Period	2015-04	2015-05	2015-06	2015-07	2015-08	2015-09	2015-10	2015-11	2015-12	2016-01	2016-02	2016-03
Score	85	85	85	87	93	93	93	93	100	100	100	100
Rating	Good	Good	Good	Good	Excellent	Excellent	Excellent	Excellent	Excellent	Excellent	Excellent	Excellent

### Spend



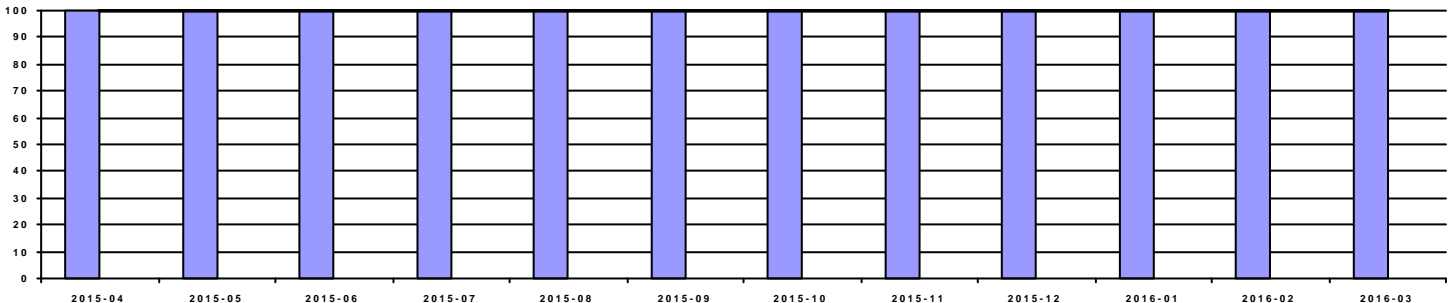
Period	2015-04	2015-05	2015-06	2015-07	2015-08	2015-09	2015-10	2015-11	2015-12	2016-01	2016-02	2016-03
Spend	4,105.29	3,261.12	5,843.65	2,636.81	3,583.96	3,949.24	6,503.41	4,377.17	5,512.87	5,792.63	8,814.48	9,067.98

### OnTime Performance (22 pts)



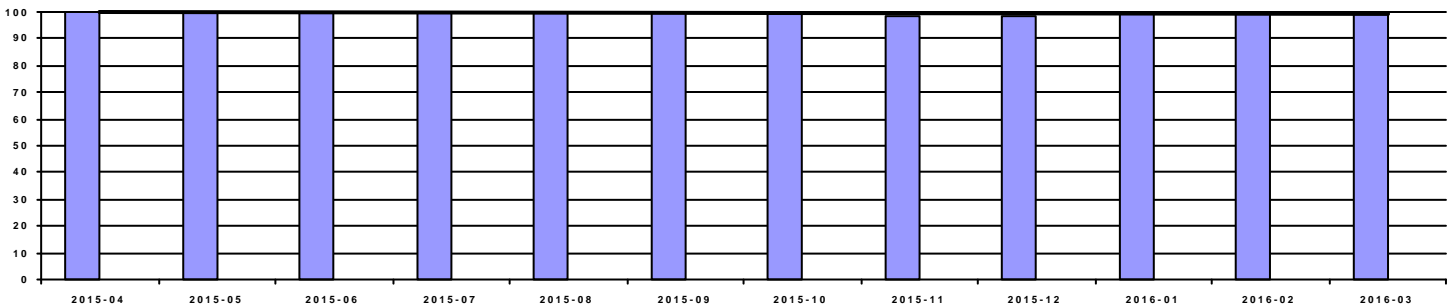
Period	2015-04	2015-05	2015-06	2015-07	2015-08	2015-09	2015-10	2015-11	2015-12	2016-01	2016-02	2016-03
OnTime	98.73%	98.46%	98.32%	100.00%	100.00%	100.00%	99.23%	100.00%	99.28%	99.12%	99.17%	100.00%
Score	22	22	22	22	22	22	22	22	22	22	22	22

### Fill Rate (10 pts)



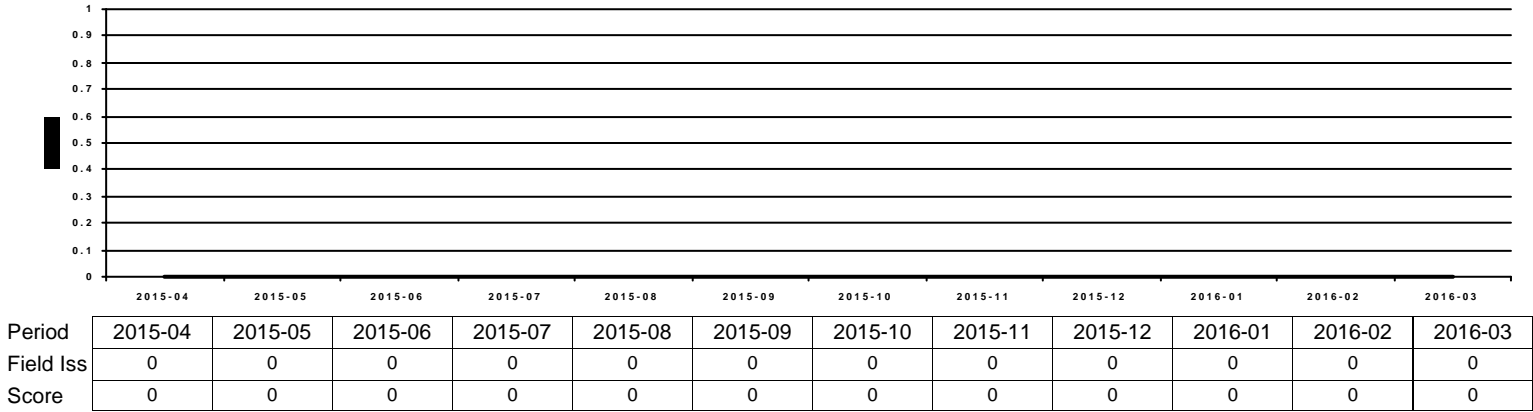
Period	2015-04	2015-05	2015-06	2015-07	2015-08	2015-09	2015-10	2015-11	2015-12	2016-01	2016-02	2016-03
Fill Rate	100.00%	100.00%	100.00%	100.00%	100.00%	100.00%	100.00%	100.00%	100.00%	100.00%	100.00%	100.00%
Score	10	10	10	10	10	10	10	10	10	10	10	10

### Quality Performance (23 pts)

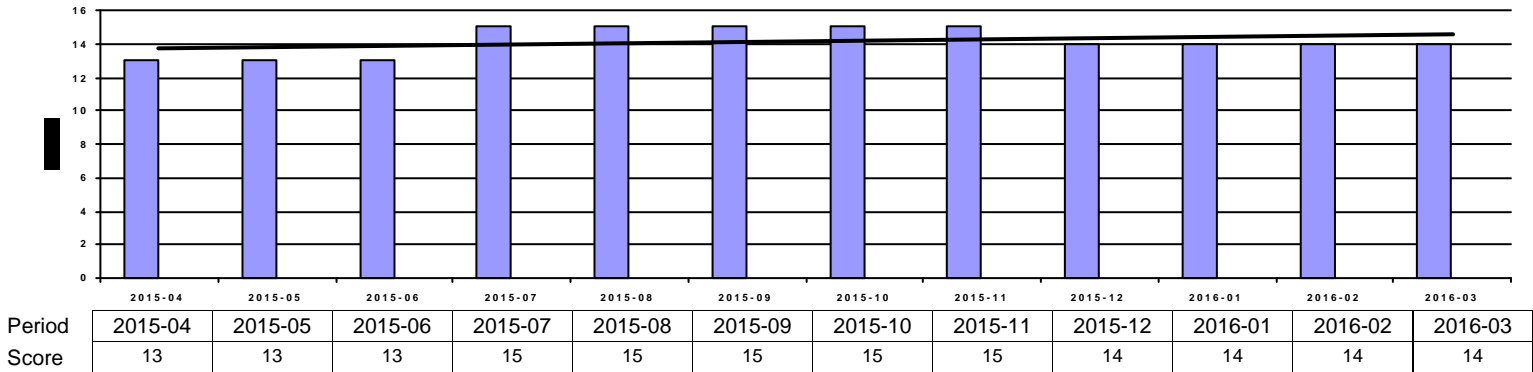


Period	2015-04	2015-05	2015-06	2015-07	2015-08	2015-09	2015-10	2015-11	2015-12	2016-01	2016-02	2016-03
Quality	100.00%	100.00%	100.00%	100.00%	100.00%	100.00%	99.23%	98.88%	98.55%	99.12%	100.00%	99.45%
Score	23	23	23	23	23	23	23	23	23	23	23	23

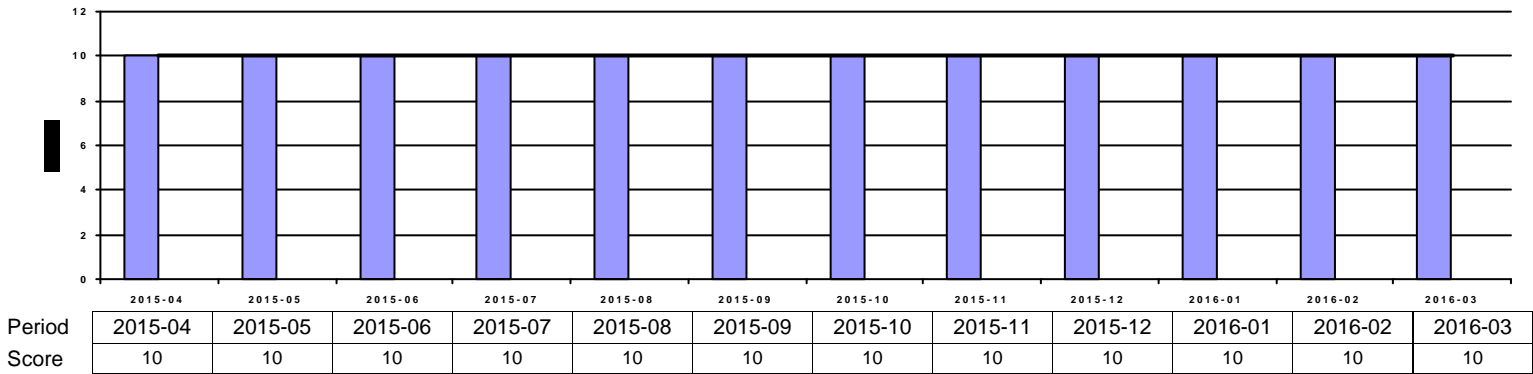
**Field Issues (-5 pts each)**



**Intangibles (15 pts)**



**Acknowledgement Performance (10 pts)**



Period	2015-04	2015-05	2015-06	2015-07	2015-08	2015-09	2015-10	2015-11	2015-12	2016-01	2016-02	2016-03
Cont Imp	0	0	0	0	0	0	0	0	10	10	10	10
CompCr	3	3	3	3	9	9	9	9	7	7	7	7
CI	0	0	0	0	0	0	0	0	0	0	0	0
QMS	2	2	2	2	2	2	2	2	2	2	2	2
VMI	2	2	2	2	2	2	2	2	2	2	2	2