

Supplier Scorecard

Supplier: METALS USA



Run with Precision™

Overall Score	Rating
90-100 points	Excellent
81-89.99 points	Good
Below 81 points	Poor

% On-Time Delivery	Points
95%-100%	22
90%-94.99%	15
Below 90%	0

Fill Rate %	Points
100%	10
90%-99.99%	5
Below 90%	0

Quality Performance %	Points
98%-100%	23
92%-97.99%	15
Below 92%	0

Field Issues
-5 points each

Intangibles
Maximum Score: 15

Orders/Quotations Acknowledged	Points
100%	10
90% - 99.99%	5
Below 90%	0

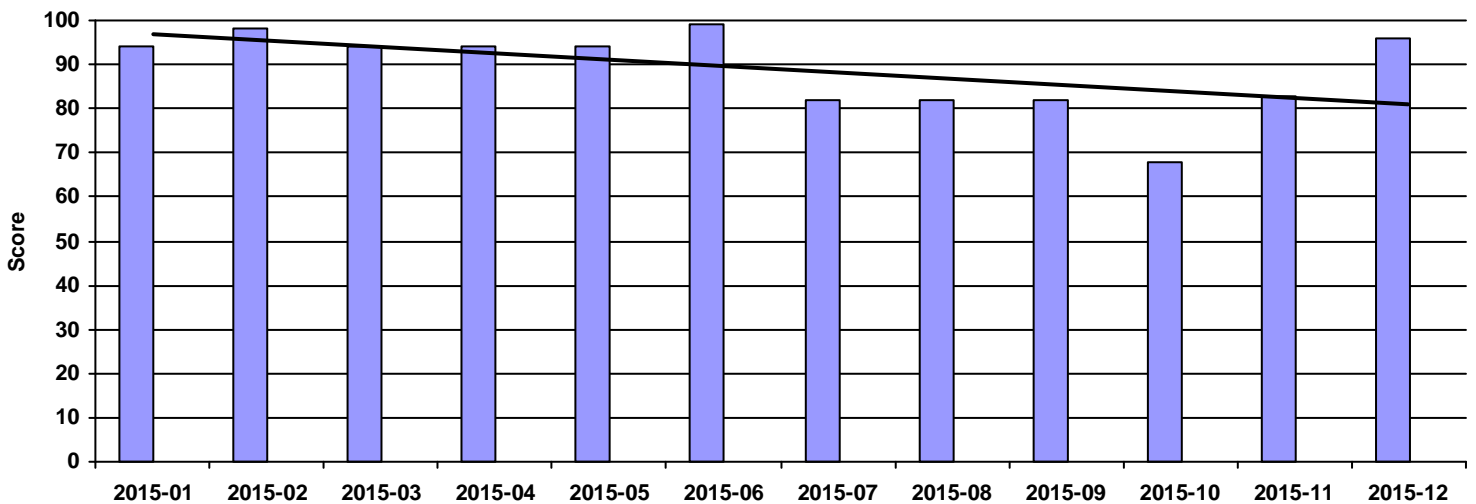
Continuous Improvement	Points
CI that directly effected DeWys	10
CI that effected supplier	8
CI meeting with purchasing team	5
NO meeting with purchasing team	0

Commercial Credit Score Class	Points
5 - High	1
4	2
3 - Medium	3
2	4
1 - Low	5

Financial Stress Score Class	Points
5 - High	1
4	2
3 - Medium	3
2	4
1 - Low	5

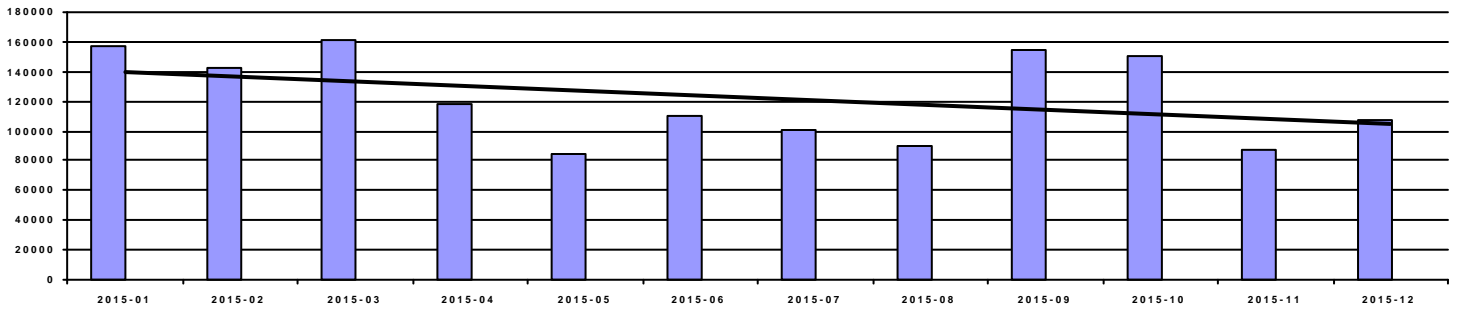
Continuous Improvement Credential	Points
Registered Quality Management System	+2
Vendor Managed Inventory	+2
Team/Person responsible for CI(full time)	+2

Overall Score



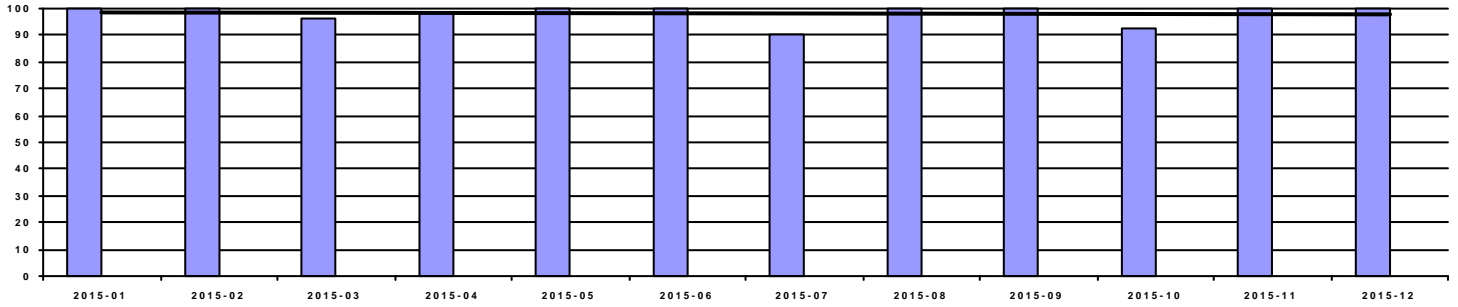
Period	2015-01	2015-02	2015-03	2015-04	2015-05	2015-06	2015-07	2015-08	2015-09	2015-10	2015-11	2015-12
Score	94	98	94	94	94	99	82	82	82	68	83	96
Rating	Excellent	Excellent	Excellent	Excellent	Excellent	Excellent	Good	Good	Good	Poor	Good	Excellent

Spend



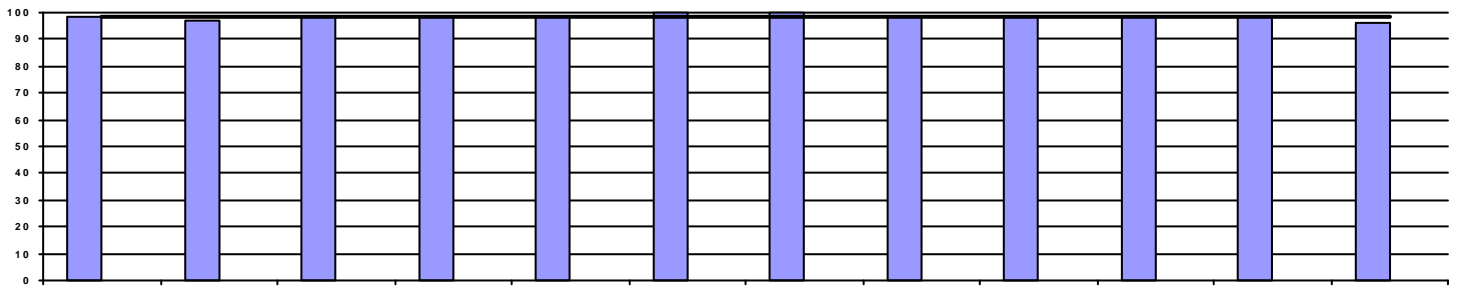
Period	2015-01	2015-02	2015-03	2015-04	2015-05	2015-06	2015-07	2015-08	2015-09	2015-10	2015-11	2015-12
Spend	157,471.16	142,369.32	161,209.88	118,220.95	84,304.95	109,678.88	101,310.24	89,431.70	154,825.40	150,851.04	86,828.30	107,786.70

OnTime Performance (22 pts)



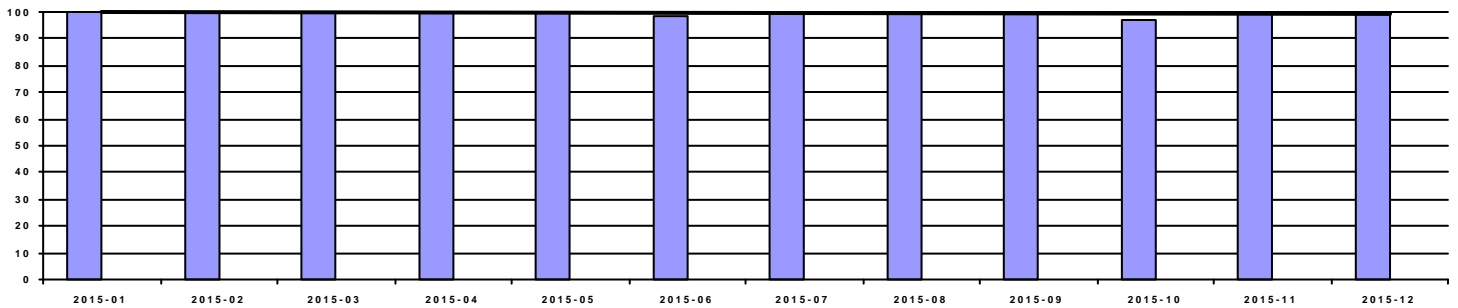
Period	2015-01	2015-02	2015-03	2015-04	2015-05	2015-06	2015-07	2015-08	2015-09	2015-10	2015-11	2015-12
OnTime	100.00%	100.00%	96.55%	98.48%	100.00%	100.00%	90.54%	100.00%	100.00%	92.65%	100.00%	100.00%
Score	22	22	22	22	22	22	15	22	22	15	22	22

Fill Rate (10 pts)



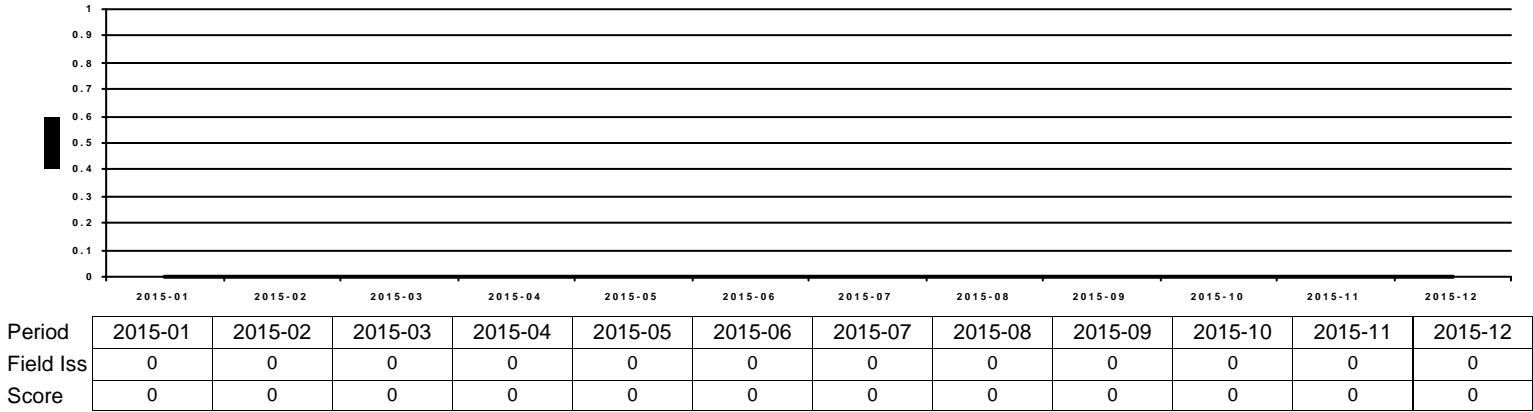
Period	2015-01	2015-02	2015-03	2015-04	2015-05	2015-06	2015-07	2015-08	2015-09	2015-10	2015-11	2015-12
Fill Rate	98.67%	96.97%	98.85%	98.48%	98.25%	100.00%	100.00%	98.59%	98.80%	98.53%	98.18%	96.55%
Score	5	5	5	5	5	10	10	5	5	5	5	5

Quality Performance (23 pts)

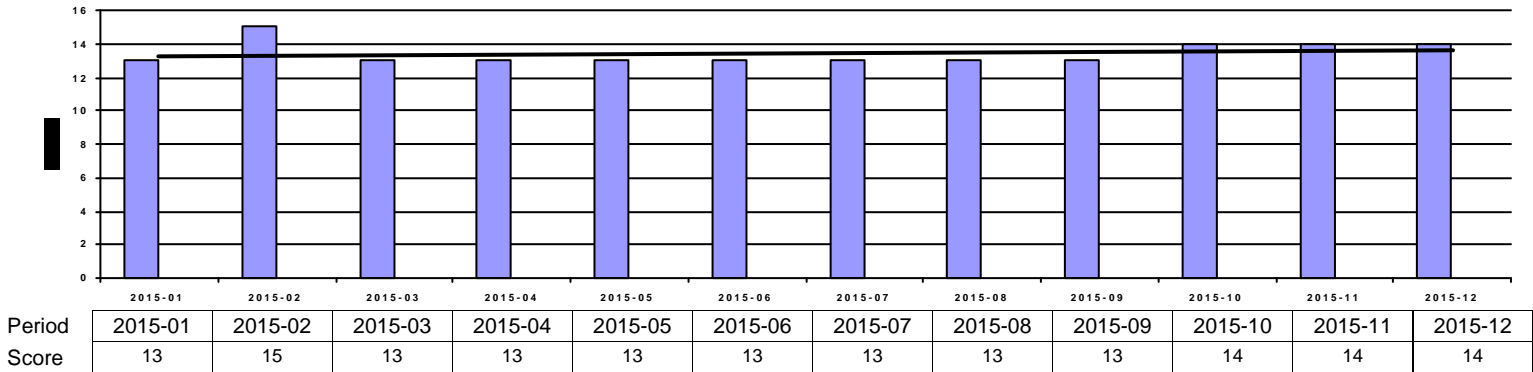


Period	2015-01	2015-02	2015-03	2015-04	2015-05	2015-06	2015-07	2015-08	2015-09	2015-10	2015-11	2015-12
Quality	100.00%	100.00%	100.00%	100.00%	100.00%	98.55%	100.00%	100.00%	100.00%	97.06%	100.00%	100.00%
Score	23	23	23	23	23	23	23	23	23	15	23	23

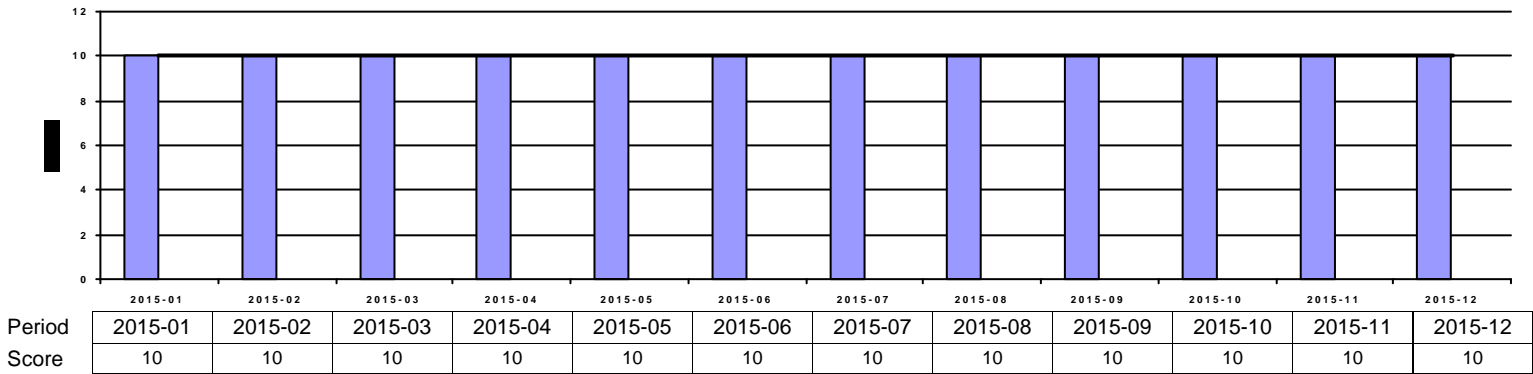
Field Issues (-5 pts each)



Intangibles (15 pts)



Acknowledgement Performance (10 pts)



Period	2015-01	2015-02	2015-03	2015-04	2015-05	2015-06	2015-07	2015-08	2015-09	2015-10	2015-11	2015-12
Cont Imp	10	10	10	10	10	10	0	0	0	0	0	10
CompCr	7	9	7	7	7	7	7	5	5	5	5	8
CI	2	2	2	2	2	2	2	2	2	2	2	2
QMS	2	2	2	2	2	2	2	2	2	2	2	2
VMI	0	0	0	0	0	0	0	0	0	0	0	0