

Supplier Scorecard

Supplier: PHOENIX METALS



Overall Score	Rating
90-100 points	Excellent
81-89.99 points	Good
Below 81 points	Poor

% On-Time Delivery	Points
95%-100%	22
90%-94.99%	15
Below 90%	0

Fill Rate %	Points
100%	10
90%-99.99%	5
Below 90%	0

Quality Performance %	Points
98%-100%	23
92%-97.99%	15
Below 92%	0

Field Issues
-5 points each

Intangibles
Maximum Score: 15

Orders/Quotations Acknowledged	Points
100%	10
90% - 99.99%	5
Below 90%	0

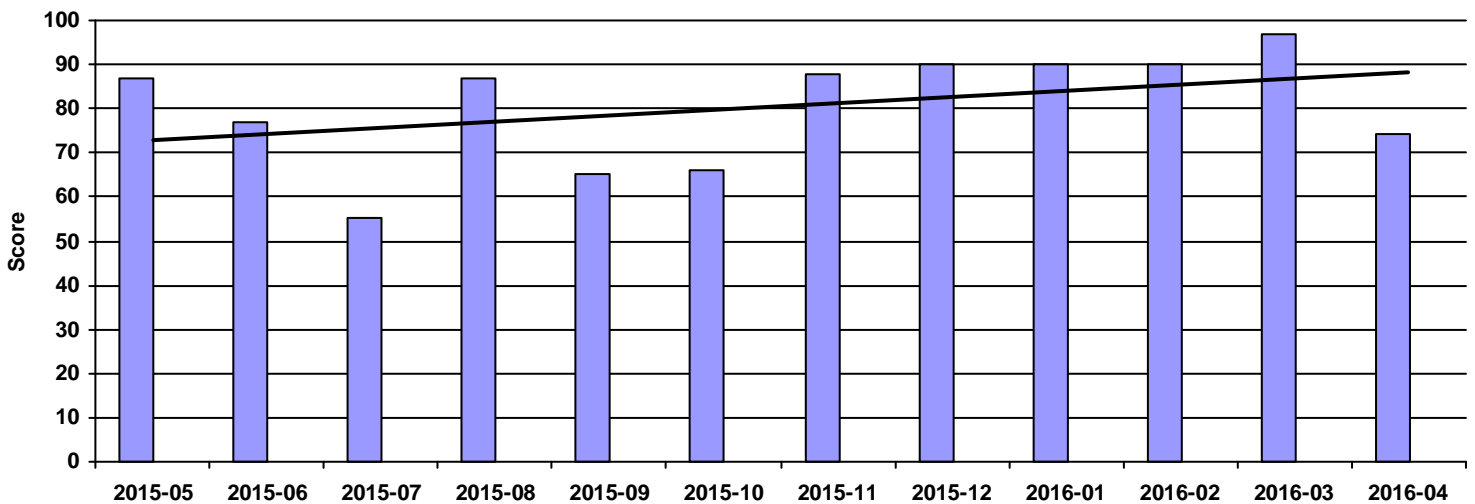
Continuous Improvement	Points
CI that directly effected DeWys	10
CI that effected supplier	8
CI meeting with purchasing team	5
NO meeting with purchasing team	0

Commercial Credit Score Class	Points
5 - High	1
4	2
3 - Medium	3
2	4
1 - Low	5

Financial Stress Score Class	Points
5 - High	1
4	2
3 - Medium	3
2	4
1 - Low	5

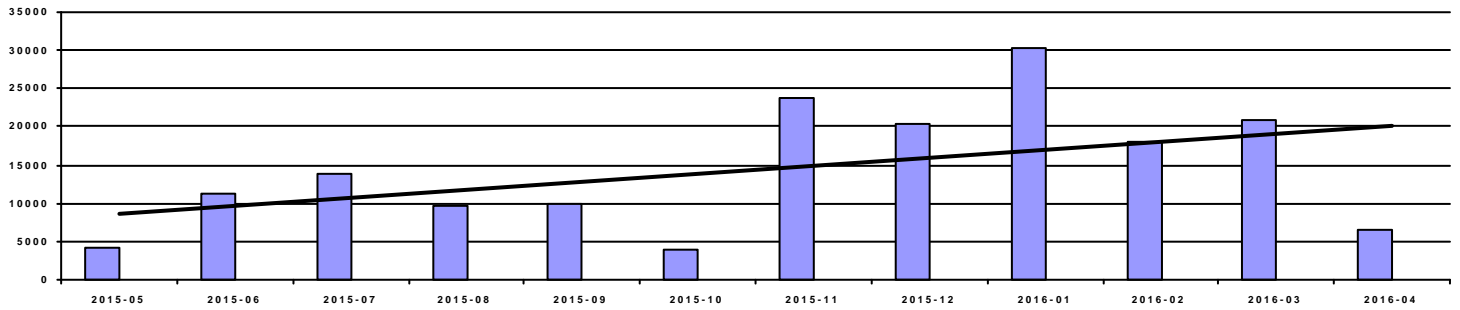
Continuous Improvement Credential	Points
Registered Quality Management System	+2
Vendor Managed Inventory	+2
Team/Person responsible for CI(full time)	+2

Overall Score



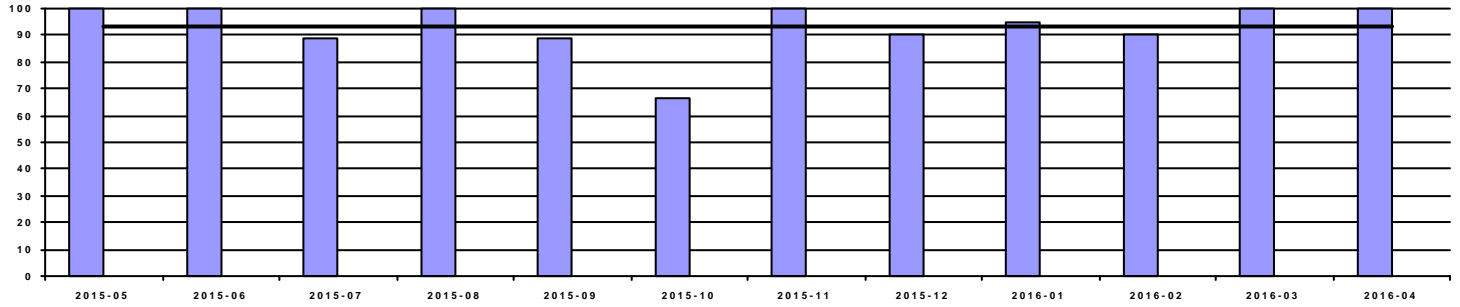
Period	2015-05	2015-06	2015-07	2015-08	2015-09	2015-10	2015-11	2015-12	2016-01	2016-02	2016-03	2016-04
Score	87	77	55	87	65	66	88	90	90	90	97	74
Rating	Good	Poor	Poor	Good	Poor	Poor	Good	Excellent	Excellent	Excellent	Excellent	Poor

Spend



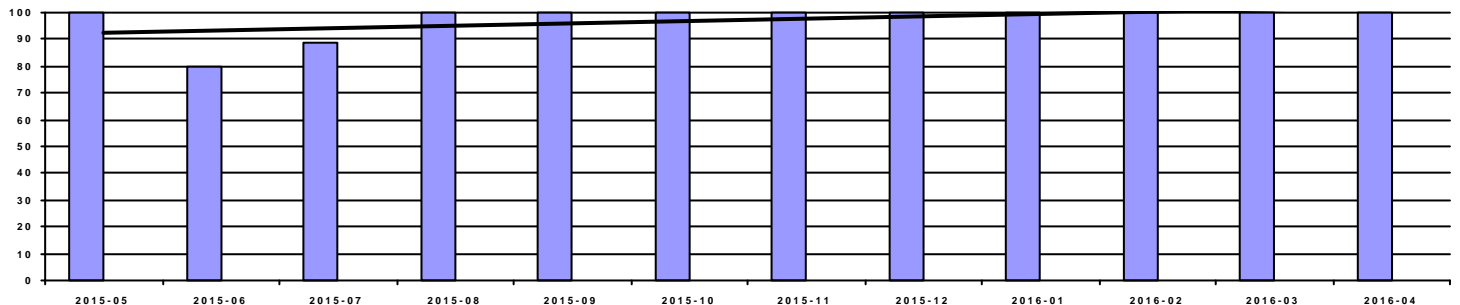
Period	2015-05	2015-06	2015-07	2015-08	2015-09	2015-10	2015-11	2015-12	2016-01	2016-02	2016-03	2016-04
Spend	4,148.68	11,102.57	13,850.34	9,591.80	10,030.95	3,824.00	23,751.82	20,331.33	30,224.68	18,087.29	20,945.88	6,462.00

OnTime Performance (22 pts)



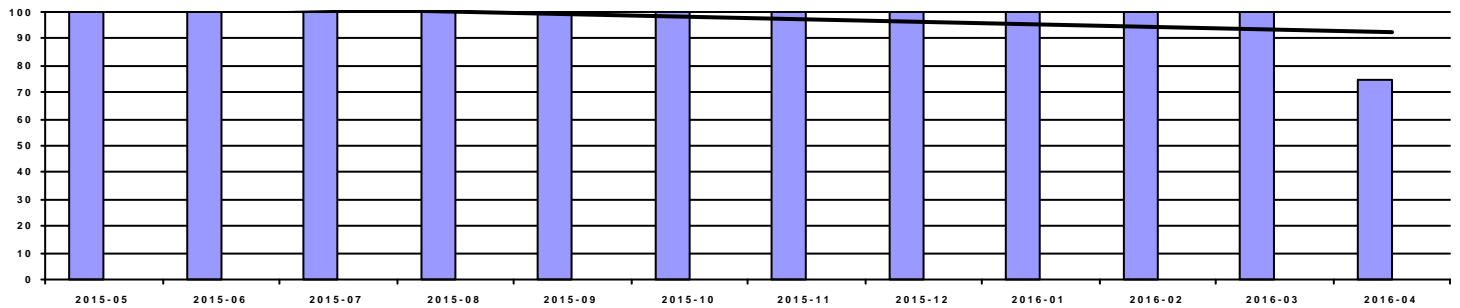
Period	2015-05	2015-06	2015-07	2015-08	2015-09	2015-10	2015-11	2015-12	2016-01	2016-02	2016-03	2016-04
OnTime	100.00%	100.00%	88.89%	100.00%	88.89%	66.67%	100.00%	90.00%	94.44%	90.00%	100.00%	100.00%
Score	22	22	0	22	0	0	22	15	15	15	22	22

Fill Rate (10 pts)



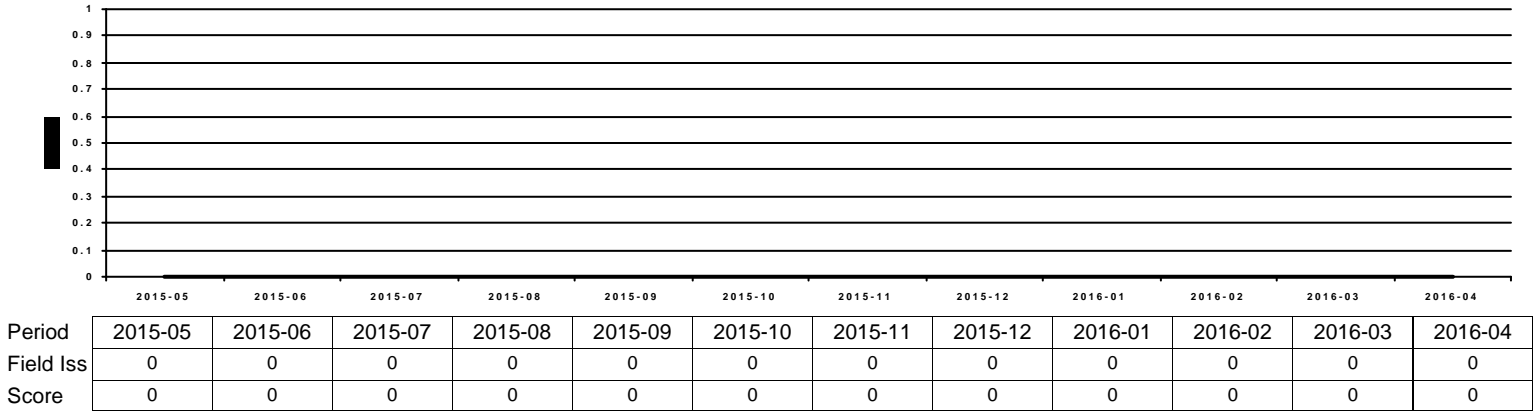
Period	2015-05	2015-06	2015-07	2015-08	2015-09	2015-10	2015-11	2015-12	2016-01	2016-02	2016-03	2016-04
Fill Rate	100.00%	80.00%	88.89%	100.00%	100.00%	100.00%	100.00%	100.00%	100.00%	100.00%	100.00%	100.00%
Score	10	0	0	10	10	10	10	10	10	10	10	10

Quality Performance (23 pts)

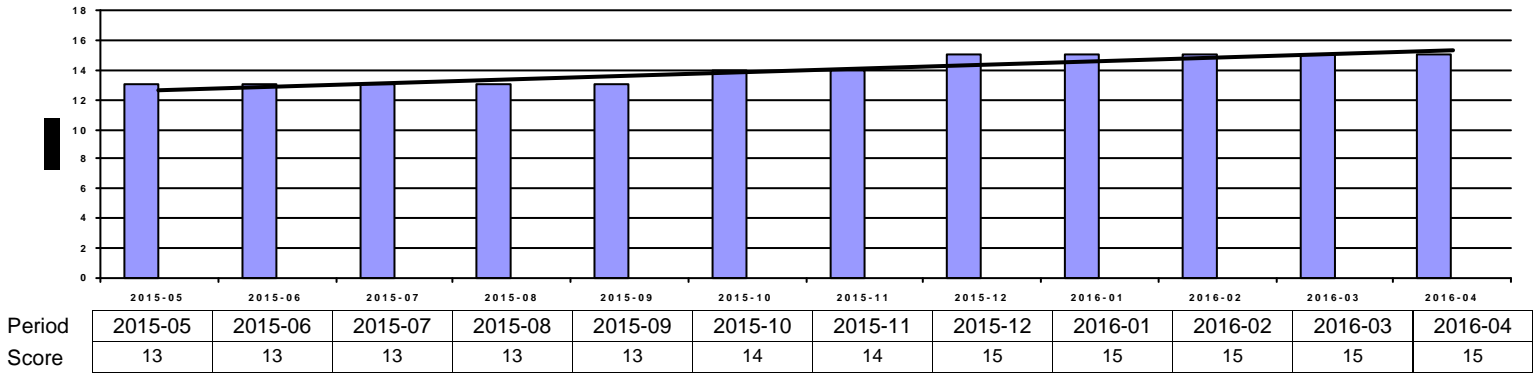


Period	2015-05	2015-06	2015-07	2015-08	2015-09	2015-10	2015-11	2015-12	2016-01	2016-02	2016-03	2016-04
Quality	100.00%	100.00%	100.00%	100.00%	100.00%	100.00%	100.00%	100.00%	100.00%	100.00%	100.00%	75.00%
Score	23	23	23	23	23	23	23	23	23	23	23	0

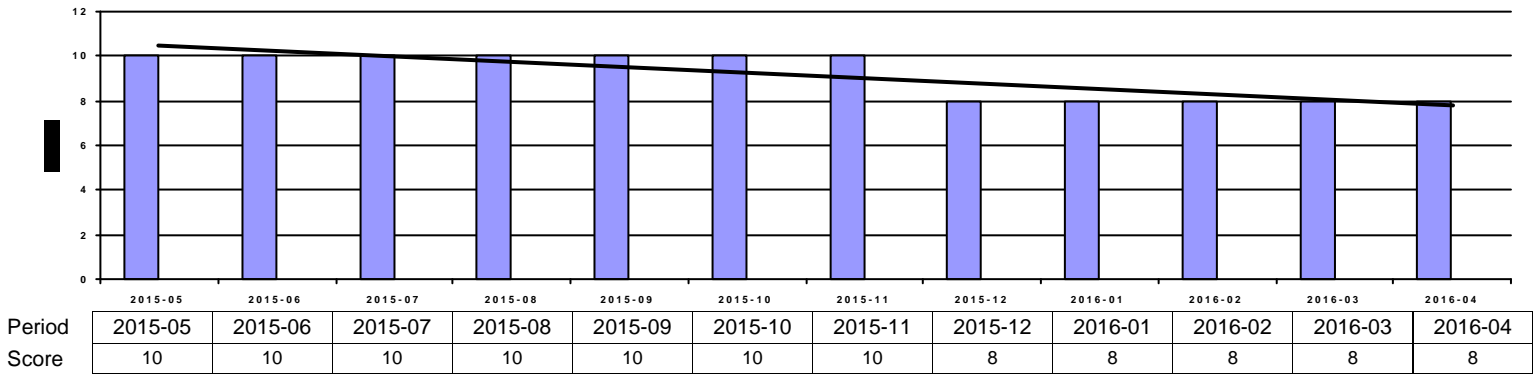
Field Issues (-5 pts each)



Intangibles (15 pts)



Acknowledgement Performance (10 pts)



Period	2015-05	2015-06	2015-07	2015-08	2015-09	2015-10	2015-11	2015-12	2016-01	2016-02	2016-03	2016-04
Cont Imp	0	0	0	0	0	0	0	10	10	10	10	10
CompCr	9	9	9	9	9	9	9	9	9	9	9	9
CI	0	0	0	0	0	0	0	0	0	0	0	0
QMS	0	0	0	0	0	0	0	0	0	0	0	0
VMI	0	0	0	0	0	0	0	0	0	0	0	0