

Supplier Scorecard

Supplier: RYERSON INC



Run with Precision™

Overall Score	Rating
90-100 points	Excellent
81-89.99 points	Good
Below 81 points	Poor

% On-Time Delivery	Points
95%-100%	22
90%-94.99%	15
Below 90%	0

Fill Rate %	Points
100%	10
90%-99.99%	5
Below 90%	0

Quality Performance %	Points
98%-100%	23
92%-97.99%	15
Below 92%	0

Field Issues
-5 points each

Intangibles
Maximum Score: 15

Orders/Quotations Acknowledged	Points
100%	10
90% - 99.99%	5
Below 90%	0

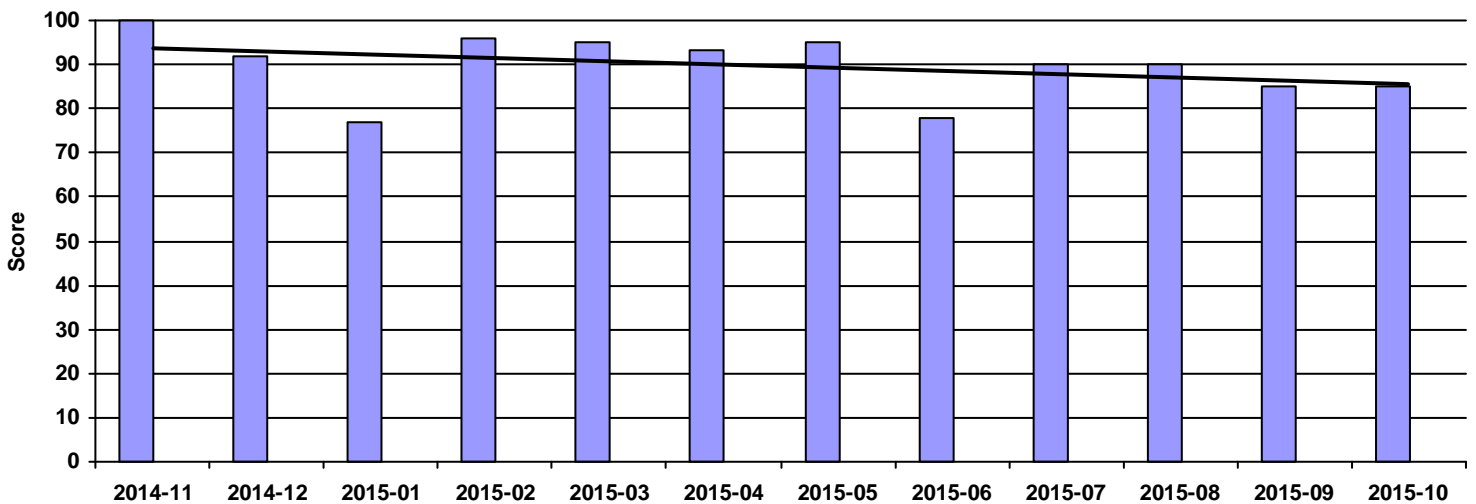
Continuous Improvement	Points
CI that directly effected DeWys	10
CI that effected supplier	8
CI meeting with purchasing team	5
NO meeting with purchasing team	0

Commercial Credit Score Class	Points
5 - High	1
4	2
3 - Medium	3
2	4
1 - Low	5

Financial Stress Score Class	Points
5 - High	1
4	2
3 - Medium	3
2	4
1 - Low	5

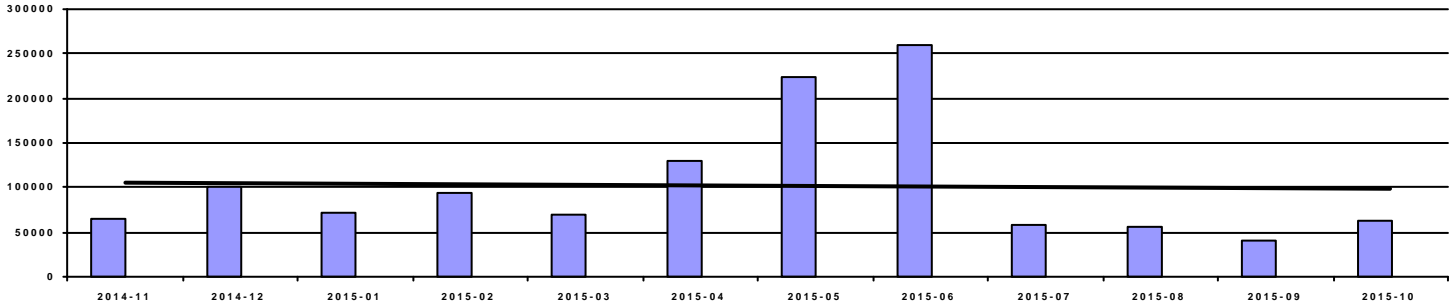
Continuous Improvement Credential	Points
Registered Quality Management System	+2
Vendor Managed Inventory	+2
Team/Person responsible for CI(full time)	+2

Overall Score



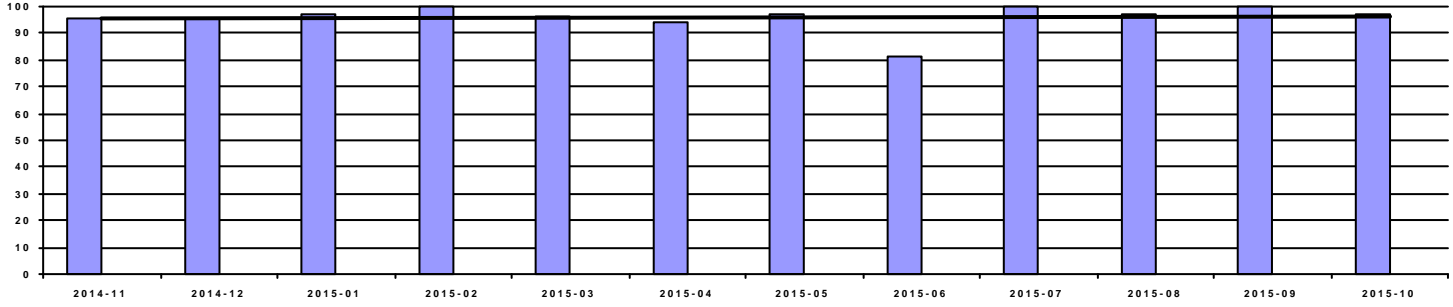
Period	2014-11	2014-12	2015-01	2015-02	2015-03	2015-04	2015-05	2015-06	2015-07	2015-08	2015-09	2015-10
Score	100	92	77	96	95	93	95	78	90	90	85	85
Rating	Excellent	Excellent	Poor	Excellent	Excellent	Excellent	Excellent	Poor	Excellent	Excellent	Good	Good

Spend



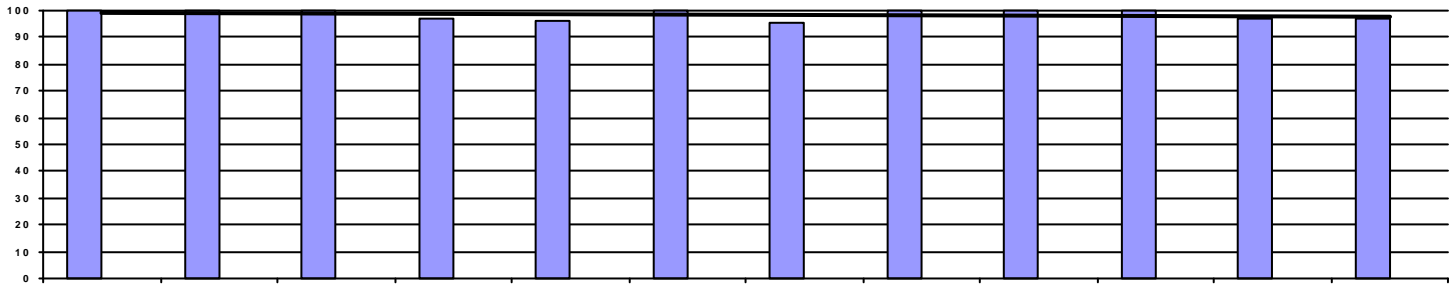
Period	2014-11	2014-12	2015-01	2015-02	2015-03	2015-04	2015-05	2015-06	2015-07	2015-08	2015-09	2015-10
Spend	65,103.14	100,744.41	70,851.33	93,395.83	68,920.13	130,331.71	224,255.70	260,585.63	58,446.32	54,988.65	39,969.73	62,850.38

OnTime Performance (22 pts)



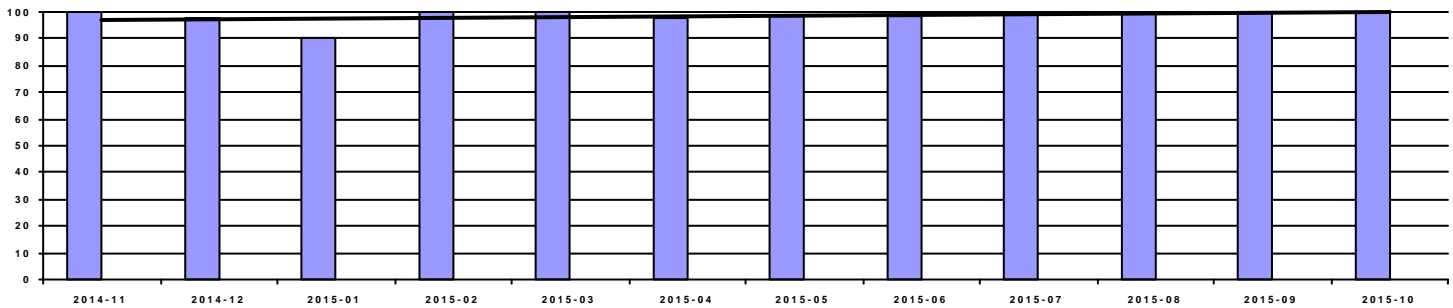
Period	2014-11	2014-12	2015-01	2015-02	2015-03	2015-04	2015-05	2015-06	2015-07	2015-08	2015-09	2015-10
OnTime	95.24%	95.74%	96.77%	100.00%	96.00%	94.34%	97.18%	81.25%	100.00%	97.14%	100.00%	97.37%
Score	22	22	22	22	22	15	22	0	22	22	22	22

Fill Rate (10 pts)



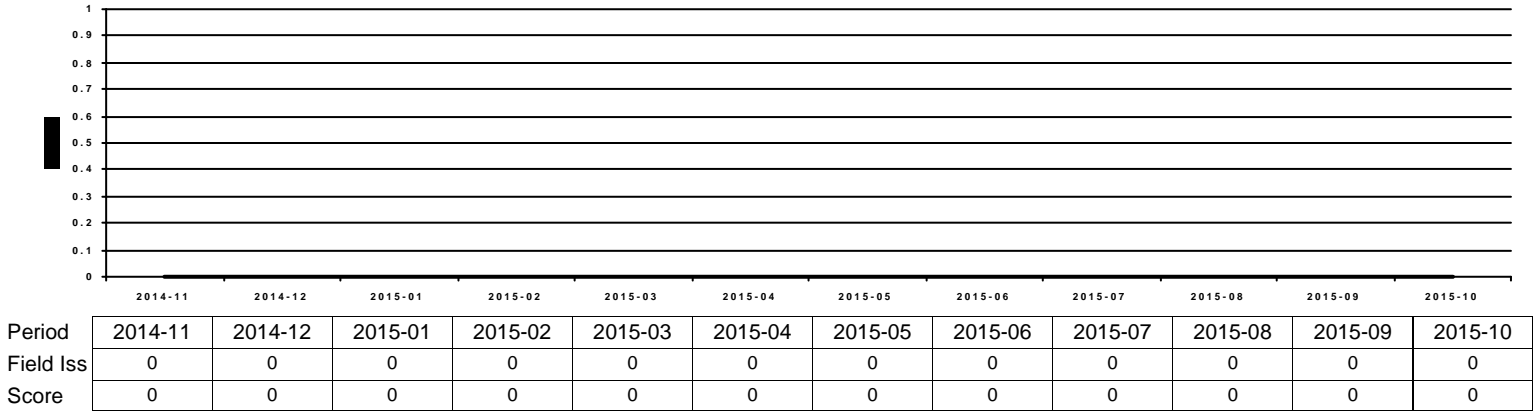
Period	2014-11	2014-12	2015-01	2015-02	2015-03	2015-04	2015-05	2015-06	2015-07	2015-08	2015-09	2015-10
Fill Rate	100.00%	100.00%	100.00%	96.97%	96.00%	100.00%	95.77%	100.00%	100.00%	100.00%	97.14%	97.37%
Score	10	10	10	5	5	10	5	10	10	10	5	5

Quality Performance (23 pts)

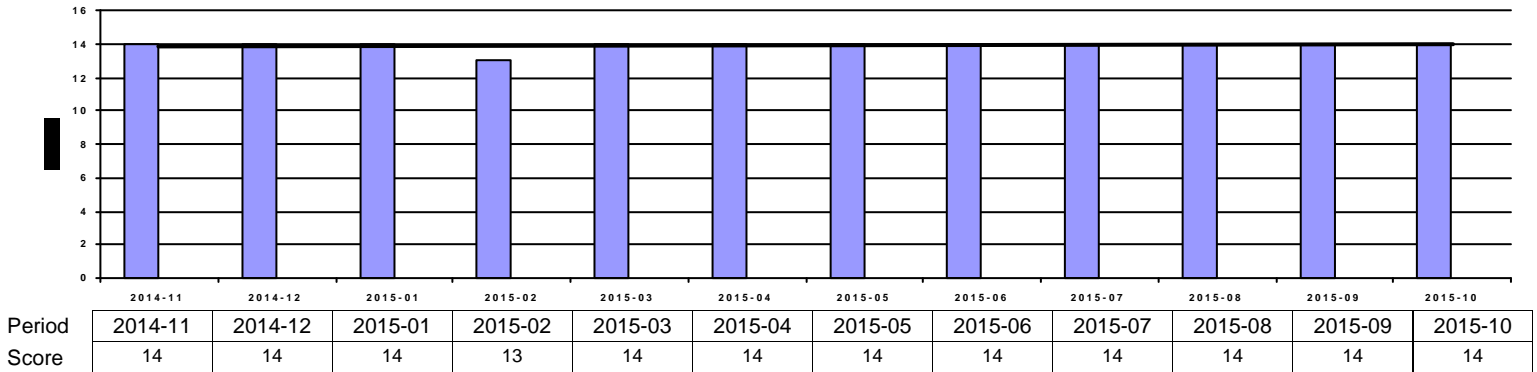


Period	2014-11	2014-12	2015-01	2015-02	2015-03	2015-04	2015-05	2015-06	2015-07	2015-08	2015-09	2015-10
Quality	100.00%	97.87%	90.32%	100.00%	100.00%	98.11%	98.59%	98.75%	100.00%	100.00%	100.00%	100.00%
Score	23	15	0	23	23	23	23	23	23	23	23	23

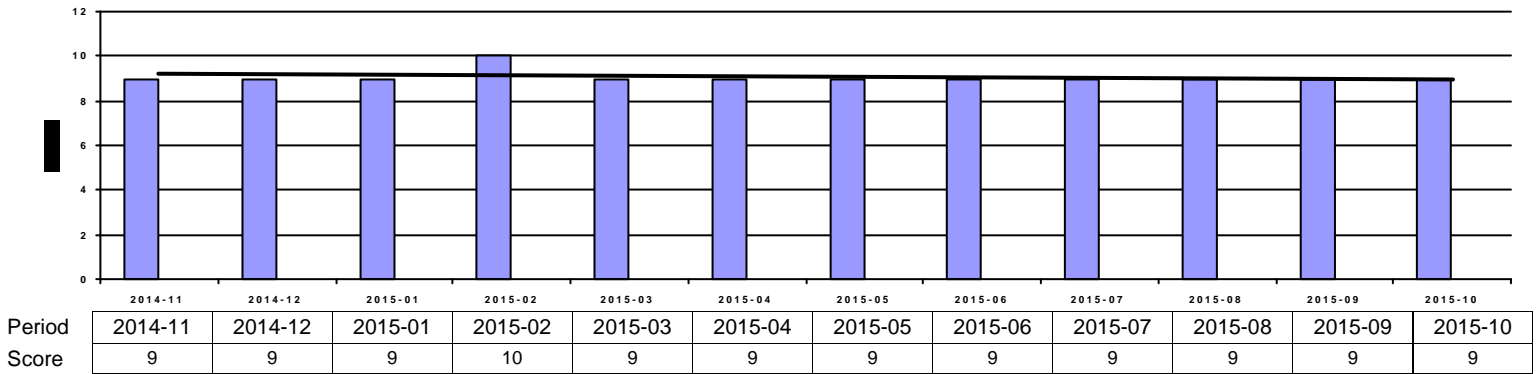
Field Issues (-5 pts each)



Intangibles (15 pts)



Acknowledgement Performance (10 pts)



Period	2014-11	2014-12	2015-01	2015-02	2015-03	2015-04	2015-05	2015-06	2015-07	2015-08	2015-09	2015-10
Cont Imp	10	10	10	10	10	10	10	10	0	0	0	0
CompCr	8	8	8	9	8	8	8	8	8	8	8	8
CI	2	2	2	2	2	2	2	2	2	2	2	2
QMS	2	2	2	2	2	2	2	2	2	2	2	2
VMI	0	0	0	0	0	0	0	0	0	0	0	0