

# Supplier Scorecard

Supplier: WORTHINGTON METALS



Overall Score	Rating
90-100 points	Excellent
81-89.99 points	Good
Below 81 points	Poor

% On-Time Delivery	Points
95%-100%	22
90%-94.99%	15
Below 90%	0

Fill Rate %	Points
100%	10
90%-99.99%	5
Below 90%	0

Quality Performance %	Points
98%-100%	23
92%-97.99%	15
Below 92%	0

Field Issues
-5 points each

Intangibles
Maximum Score: 15

Orders/Quotations Acknowledged	Points
100%	10
90% - 99.99%	5
Below 90%	0

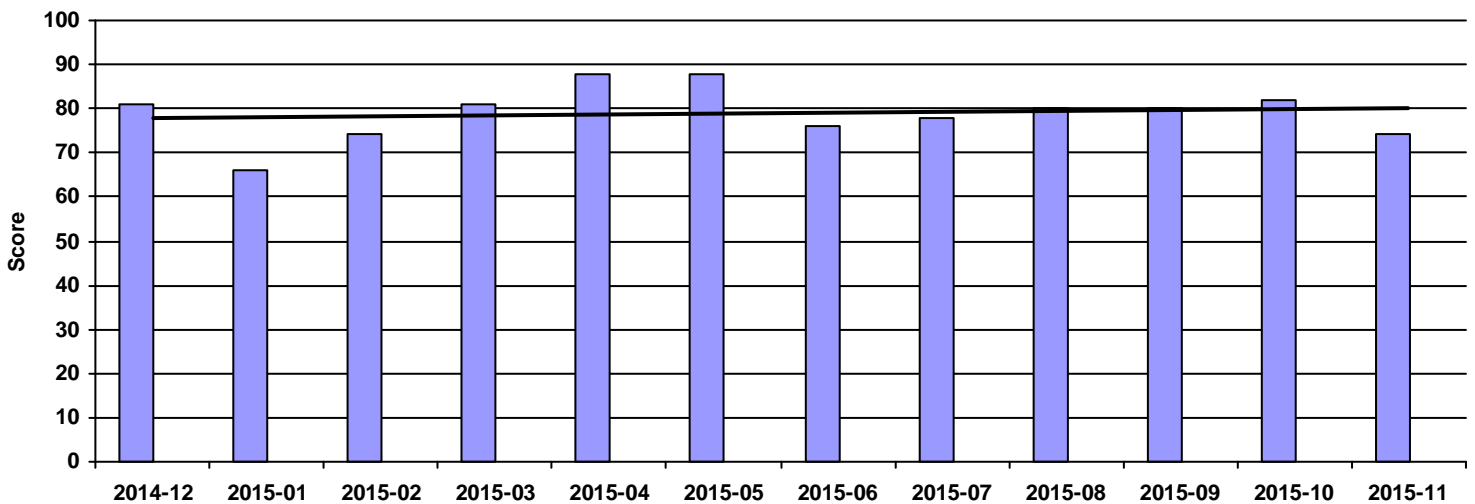
Continuous Improvement	Points
CI that directly effected DeWys	10
CI that effected supplier	8
CI meeting with purchasing team	5
NO meeting with purchasing team	0

Commercial Credit Score Class	Points
5 - High	1
4	2
3 - Medium	3
2	4
1 - Low	5

Financial Stress Score Class	Points
5 - High	1
4	2
3 - Medium	3
2	4
1 - Low	5

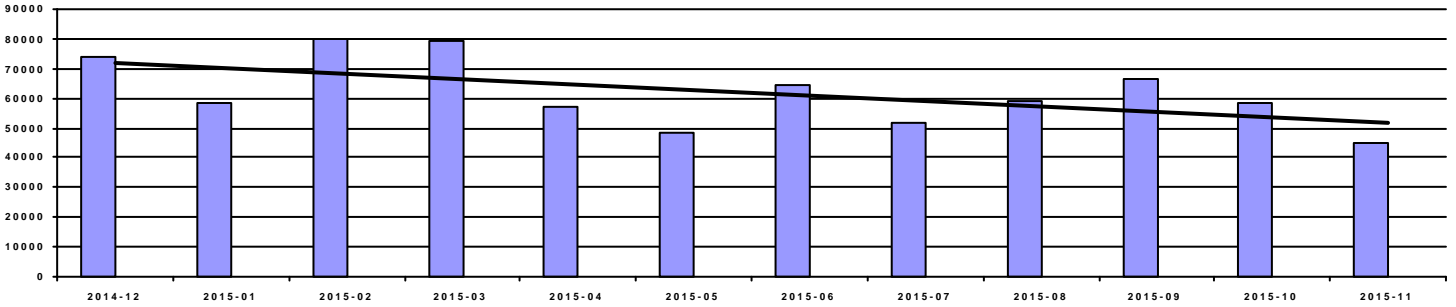
Continuous Improvement Credential	Points
Registered Quality Management System	+2
Vendor Managed Inventory	+2
Team/Person responsible for CI(full time)	+2

Overall Score



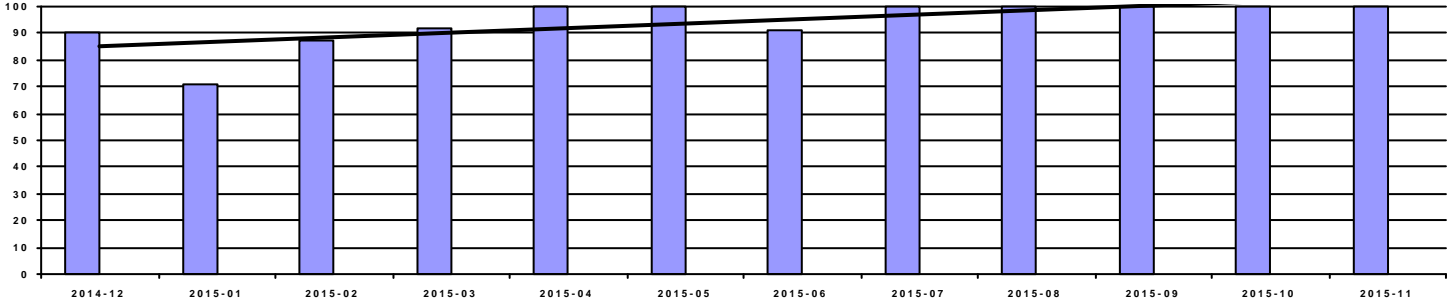
Period	2014-12	2015-01	2015-02	2015-03	2015-04	2015-05	2015-06	2015-07	2015-08	2015-09	2015-10	2015-11
Score	81	66	74	81	88	88	76	78	80	80	82	74
Rating	Good	Poor	Poor	Good	Good	Good	Poor	Poor	Poor	Poor	Good	Poor

### Spend



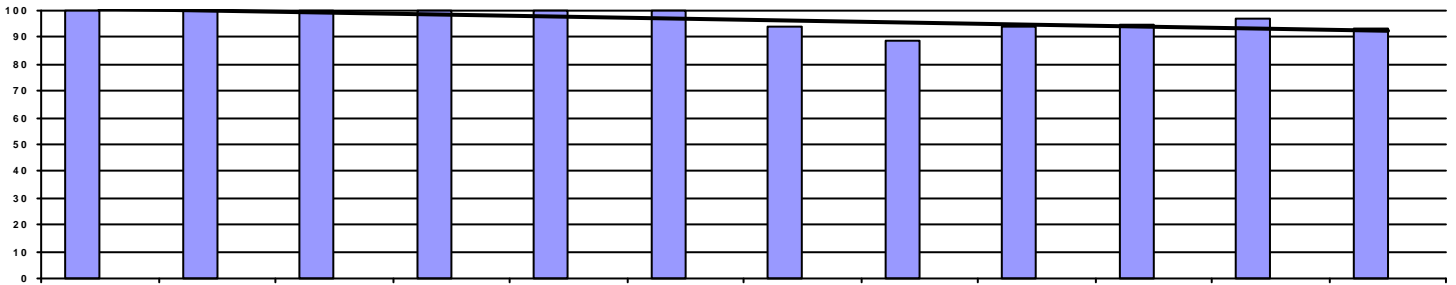
Period	2014-12	2015-01	2015-02	2015-03	2015-04	2015-05	2015-06	2015-07	2015-08	2015-09	2015-10	2015-11
Spend	74,102.76	58,199.77	79,936.51	79,579.91	56,912.48	48,109.68	64,491.72	51,695.94	58,793.20	66,448.67	58,197.44	45,317.63

### OnTime Performance (22 pts)



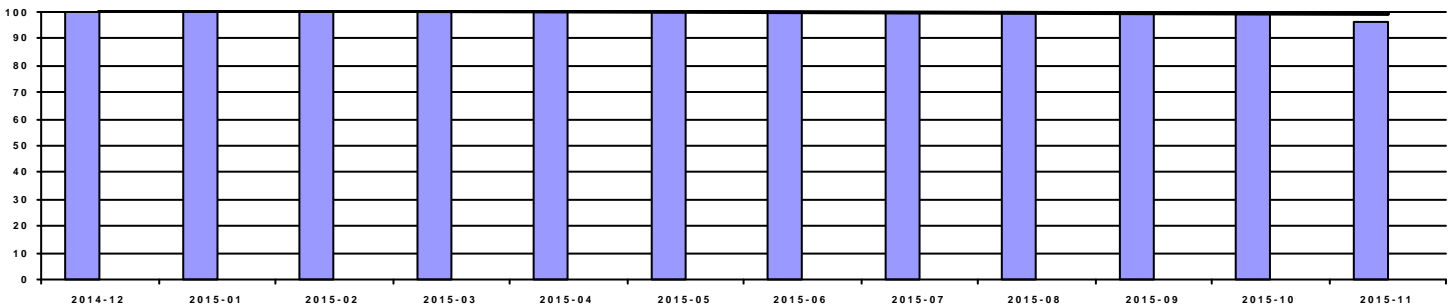
Period	2014-12	2015-01	2015-02	2015-03	2015-04	2015-05	2015-06	2015-07	2015-08	2015-09	2015-10	2015-11
OnTime	90.32%	70.83%	87.50%	92.11%	100.00%	100.00%	91.18%	100.00%	100.00%	100.00%	100.00%	100.00%
Score	15	0	0	15	22	22	15	22	22	22	22	22

### Fill Rate (10 pts)



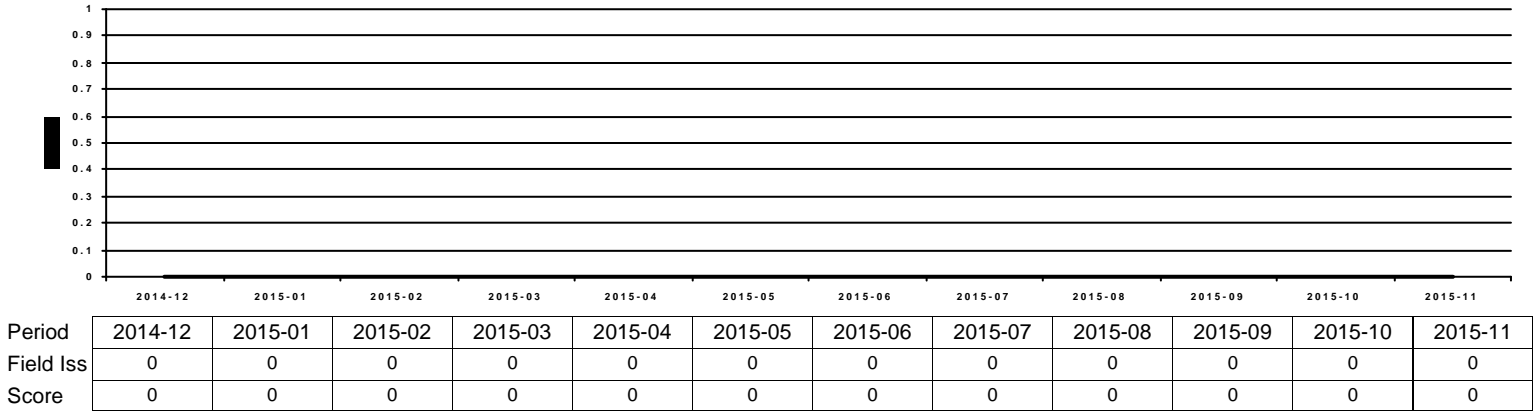
Period	2014-12	2015-01	2015-02	2015-03	2015-04	2015-05	2015-06	2015-07	2015-08	2015-09	2015-10	2015-11
Fill Rate	100.00%	100.00%	100.00%	100.00%	100.00%	100.00%	94.12%	88.89%	93.75%	94.74%	96.88%	93.10%
Score	10	10	10	10	10	10	5	0	5	5	5	5

### Quality Performance (23 pts)

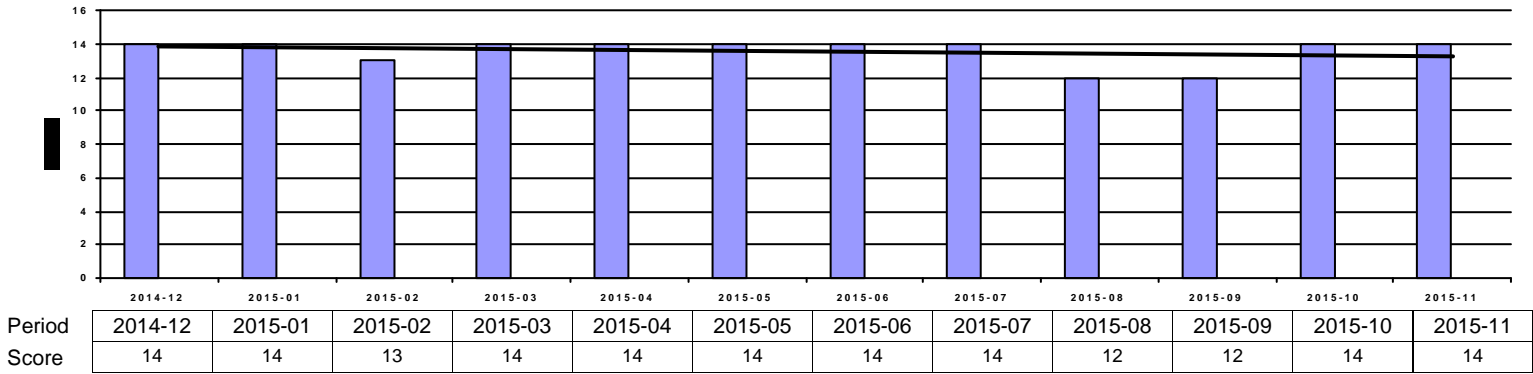


Period	2014-12	2015-01	2015-02	2015-03	2015-04	2015-05	2015-06	2015-07	2015-08	2015-09	2015-10	2015-11
Quality	100.00%	100.00%	100.00%	100.00%	100.00%	100.00%	100.00%	100.00%	100.00%	100.00%	100.00%	96.55%
Score	23	23	23	23	23	23	23	23	23	23	23	15

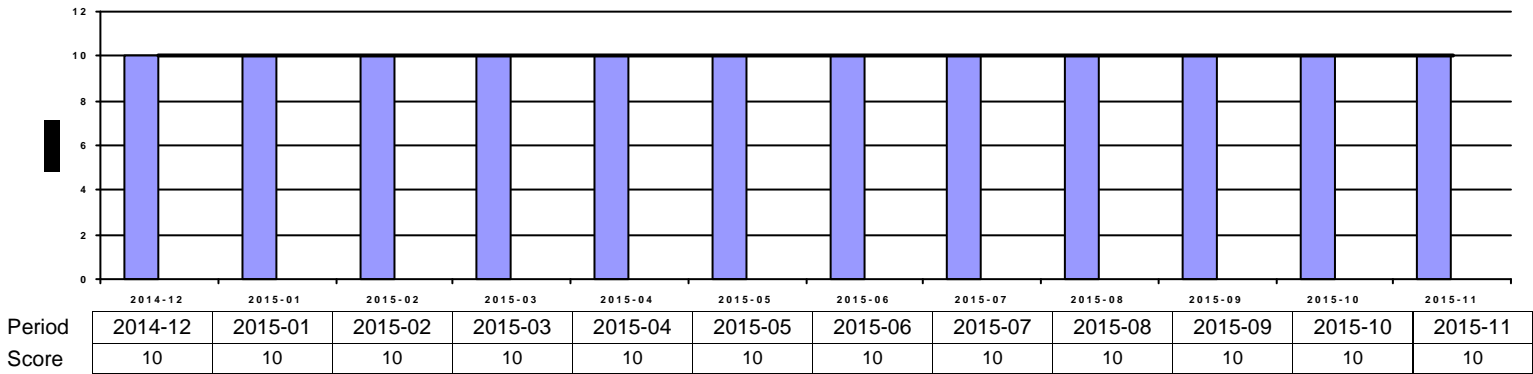
**Field Issues (-5 pts each)**



**Intangibles (15 pts)**



**Acknowledgement Performance (10 pts)**



Period	2014-12	2015-01	2015-02	2015-03	2015-04	2015-05	2015-06	2015-07	2015-08	2015-09	2015-10	2015-11
Cont Imp	0	0	10	0	0	0	0	0	0	0	0	0
CompCr	7	7	6	7	7	7	7	7	6	6	6	6
CI	0	0	0	0	0	0	0	0	0	0	0	0
QMS	2	2	2	2	2	2	2	2	2	2	2	2
VMI	0	0	0	0	0	0	0	0	0	0	0	0