

Supplier Scorecard

Supplier: WORTHINGTON METALS



Overall Score	Rating
90-100 points	Excellent
81-89.99 points	Good
Below 81 points	Poor

% On-Time Delivery	Points
95%-100%	22
90%-94.99%	15
Below 90%	0

Fill Rate %	Points
100%	10
90%-99.99%	5
Below 90%	0

Quality Performance %	Points
98%-100%	23
92%-97.99%	15
Below 92%	0

Field Issues
-5 points each

Intangibles
Maximum Score: 15

Orders/Quotations Acknowledged	Points
100%	10
90% - 99.99%	5
Below 90%	0

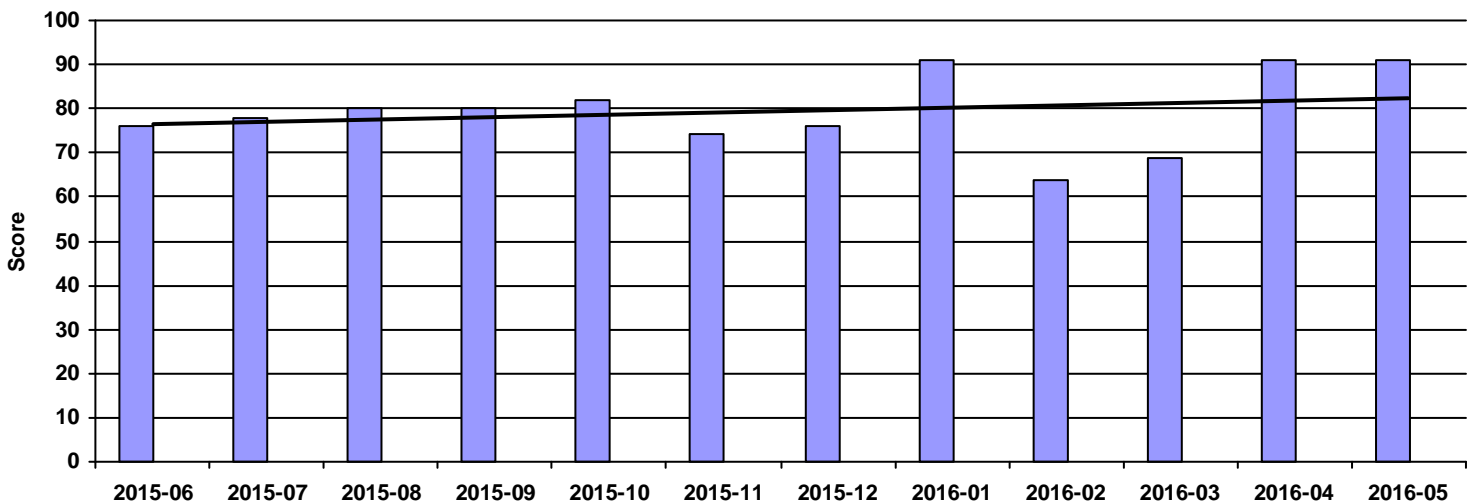
Continuous Improvement	Points
CI that directly effected DeWys	10
CI that effected supplier	8
CI meeting with purchasing team	5
NO meeting with purchasing team	0

Commercial Credit Score Class	Points
5 - High	1
4	2
3 - Medium	3
2	4
1 - Low	5

Financial Stress Score Class	Points
5 - High	1
4	2
3 - Medium	3
2	4
1 - Low	5

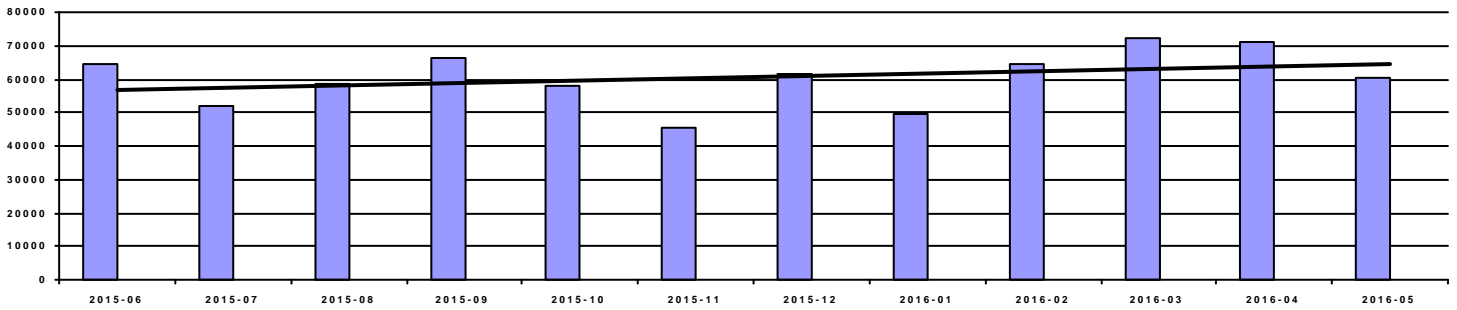
Continuous Improvement Credential	Points
Registered Quality Management System	+2
Vendor Managed Inventory	+2
Team/Person responsible for CI(full time)	+2

Overall Score



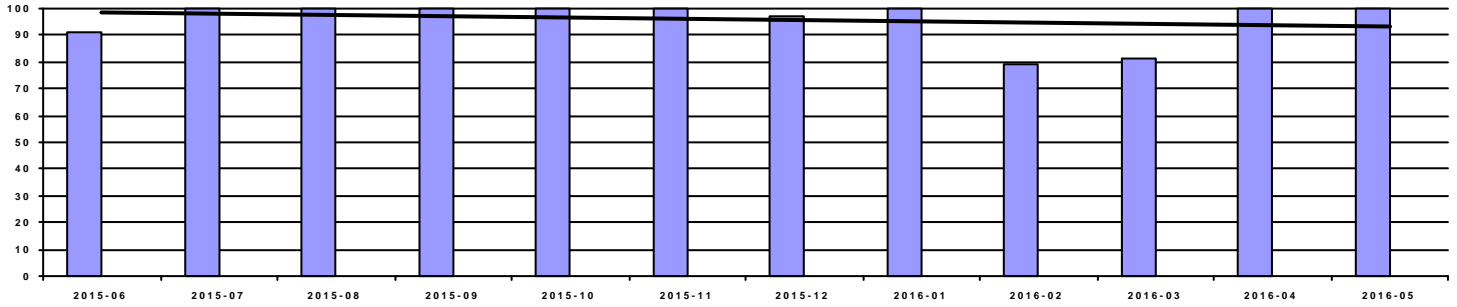
Period	2015-06	2015-07	2015-08	2015-09	2015-10	2015-11	2015-12	2016-01	2016-02	2016-03	2016-04	2016-05
Score	76	78	80	80	82	74	76	91	64	69	91	91
Rating	Poor	Poor	Poor	Poor	Good	Poor	Poor	Excellent	Poor	Poor	Excellent	Excellent

Spend



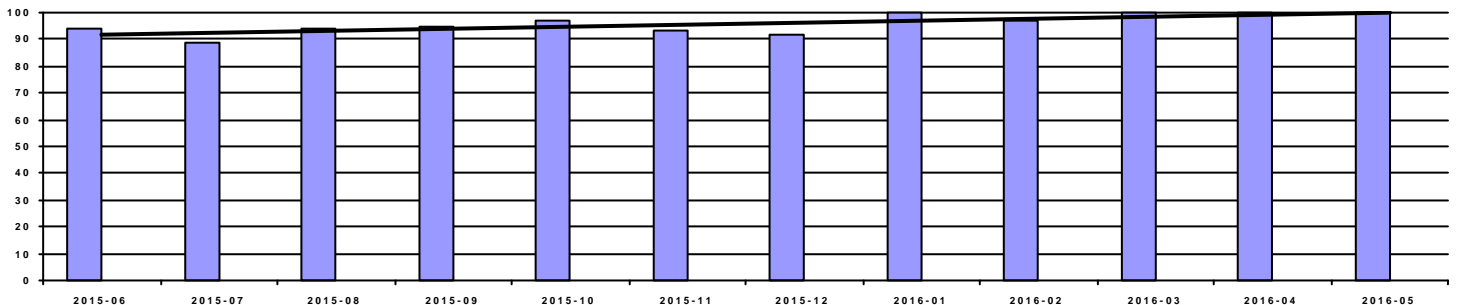
Period	2015-06	2015-07	2015-08	2015-09	2015-10	2015-11	2015-12	2016-01	2016-02	2016-03	2016-04	2016-05
Spend	64,491.72	51,695.94	58,793.20	66,448.67	58,197.44	45,317.63	61,489.70	49,523.31	64,375.64	72,353.97	70,872.39	60,532.77

OnTime Performance (22 pts)



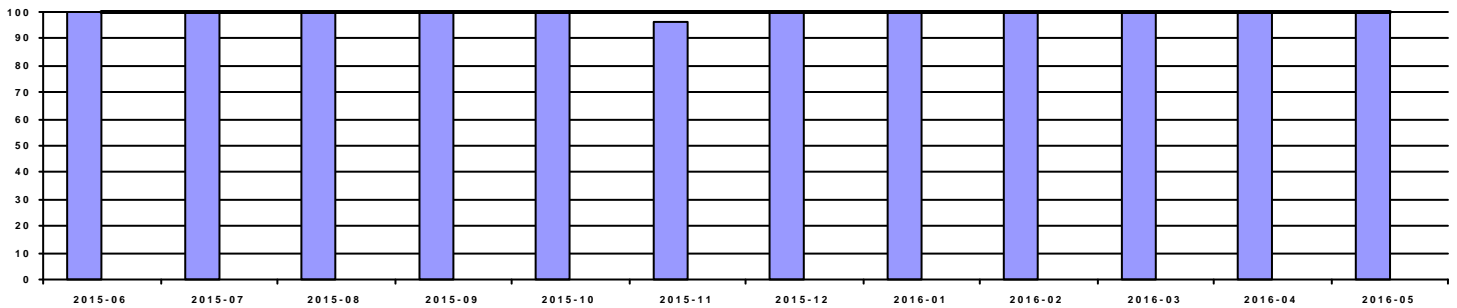
Period	2015-06	2015-07	2015-08	2015-09	2015-10	2015-11	2015-12	2016-01	2016-02	2016-03	2016-04	2016-05
OnTime	91.18%	100.00%	100.00%	100.00%	100.00%	100.00%	97.14%	100.00%	78.95%	81.08%	100.00%	100.00%
Score	15	22	22	22	22	22	22	22	0	0	22	22

Fill Rate (10 pts)



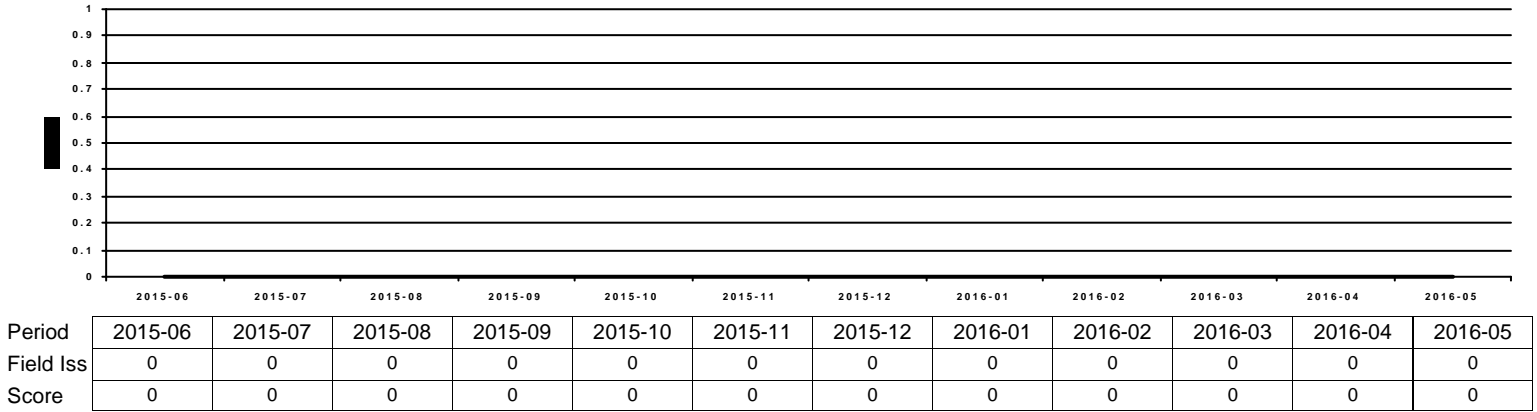
Period	2015-06	2015-07	2015-08	2015-09	2015-10	2015-11	2015-12	2016-01	2016-02	2016-03	2016-04	2016-05
Fill Rate	94.12%	88.89%	93.75%	94.74%	96.88%	93.10%	91.67%	100.00%	97.37%	100.00%	100.00%	100.00%
Score	5	0	5	5	5	5	5	10	5	10	10	10

Quality Performance (23 pts)

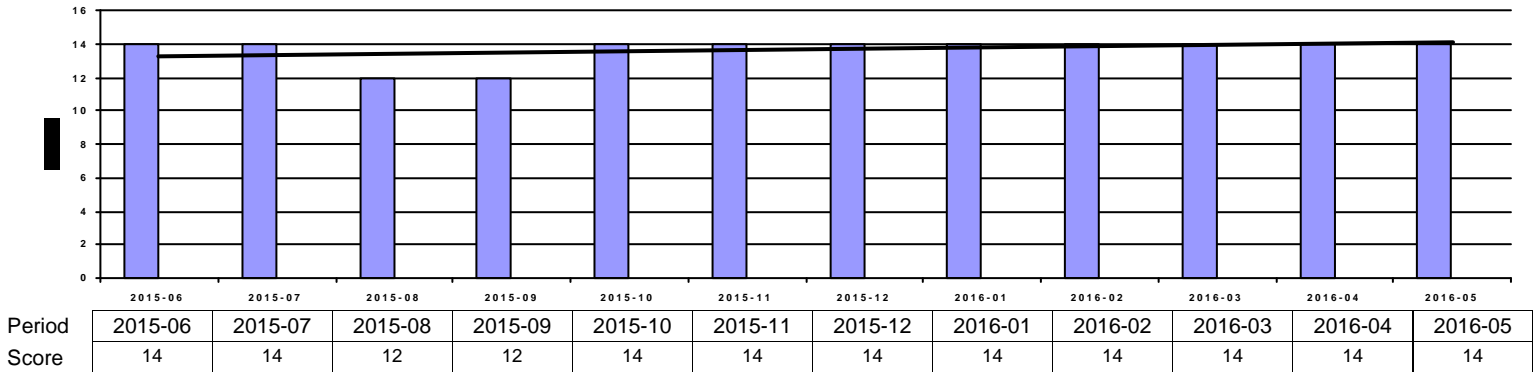


Period	2015-06	2015-07	2015-08	2015-09	2015-10	2015-11	2015-12	2016-01	2016-02	2016-03	2016-04	2016-05
Quality	100.00%	100.00%	100.00%	100.00%	100.00%	96.55%	100.00%	100.00%	100.00%	100.00%	100.00%	100.00%
Score	23	23	23	23	23	15	23	23	23	23	23	23

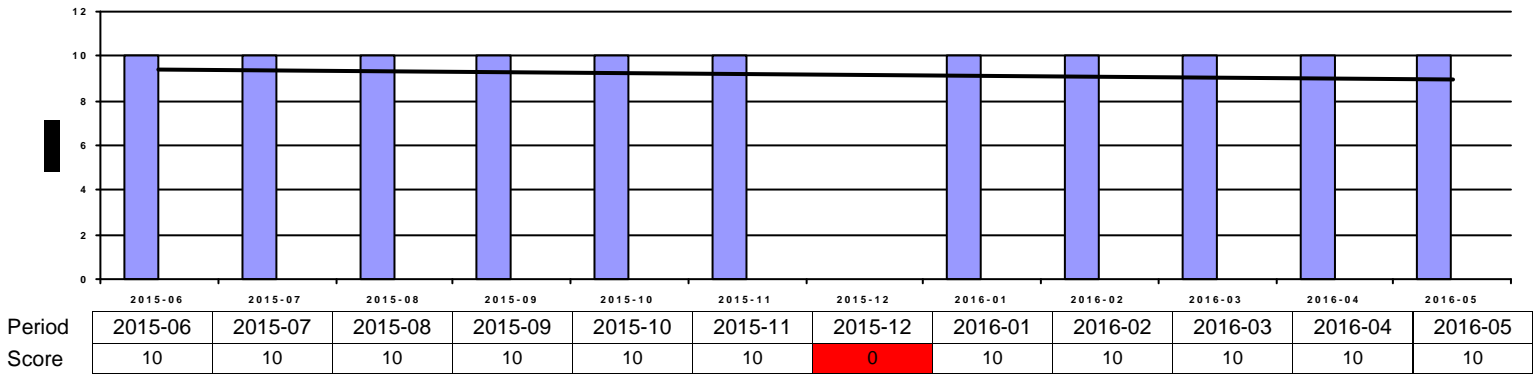
Field Issues (-5 pts each)



Intangibles (15 pts)



Acknowledgement Performance (10 pts)



Period	2015-06	2015-07	2015-08	2015-09	2015-10	2015-11	2015-12	2016-01	2016-02	2016-03	2016-04	2016-05
Cont Imp	0	0	0	0	0	0	10	10	10	10	10	10
CompCr	7	7	6	6	6	6	0	0	0	0	0	0
CI	0	0	0	0	0	0	0	0	0	0	0	0
QMS	2	2	2	2	2	2	2	2	2	2	2	2
VMI	0	0	0	0	0	0	0	0	0	0	0	0